



 28 Rooms

 1 Restaurants

 4 Star +

 1 Bars

## 98 ACRES RESORT & SPA

98 Acres Resort and Spa is a nice hotel that stands on a scenic 98 acre tea estate, surrounded by a stunning landscape. This hotel located in hill country called Ella.

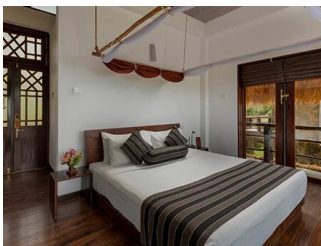
### Suitable For

- Family & Kids
- Honeymoon Benefits
- Adventurous

### Board Basis Options

- Bed & Breakfast
- Half Board
- Full Board

## ACCOMMODATIONS



### STANDARD ROOM

The standard rooms at 98 Acres Resort and Spa has the views of the Ella Gap and Small Adam's Peak Mountain and designed with modern amenities. The titanium finished, polished cement floors offer a certain rustic element to each of the standard rooms that is truly Sri Lankan. The bathrooms are finished in rubble stone and include a separate traditional stone shower with hot and cold water.



### *SUPERIOR ROOM*

Each of the spacious Superior rooms has its own private living area and offer the views of the Ella Gap and the Small Adam's Peak. The bathrooms are finished in rubble stones, completed with a separate traditional stone shower with hot and cold water and a unique wash basin and tap made of stone to complement the luxurious interior.



### *PREMIUM DELUXE*

Rooms are spacious & offer the views of the Ella Gap & the small Adam's peak in Ella. Spacious bathrooms with large shower with mountain views, comes with hot & cold water and modern amenities. The rooms have timber floors and balconies are laid with polished titanium floor.



### *HONEYMOON DELUXE*

Each of the rooms has its own private living area and offers the views of the Ella Gap and the Small Adam's Peak. The bathrooms are finished in rubble stone and include a separate traditional stone shower and oversized bathtub with hot and cold water.



### *GREENLAND SUITE*

This room offers a view of the Ella Gap & the Mini Adam's peak in Ella. The suite is equipped with a kitchenette and a pantry which comes fully completed with cooking facilities & equipment.



### *GRAND EXECUTIVE SUITE*

The master bedroom is situated on the upper floor with living and outdoor dining area which opens out to a private plunge pool and a wooden deck with outdoor seating and pool beds overlooking the Ella Gap & the small Adam's peak. The room is equipped with a large en-suite bathroom with shower, provided with hot & cold water. The annexed bedroom is situated on the ground floor with an attached bathroom and a balcony with the same view of the tea plantation and the small Adam's peak. The suite also comes with a fully equipped kitchenette with cutlery, glassware, crockery and includes a butler service to enhance the holiday experience. Guests have the option of booking this unit as a double suite or can be converted to accommodate four persons in the entire unit.



GALLERY

