



 9 Rooms

 1 Restaurants

 3 Star

 1 Bars

AATHMA COLOMBO HOUSE

Suitable For

- Family & Kids
- Buy Outs
- City Hotel

Board Basis Options


- Breakfast
- Half Board
- Full Board

ACCOMMODATIONS



SIMHA SUITE


The Simha Suite at Aathma Colombo House is colorful, bright and spacious. It is one of the hotel's larger suites at 84 sqm and is situated on the 1st floor. The suite comes equipped with a rain shower, Jacuzzi bath tub, flat screen TV, mini-fridge and a super king size four-poster bed. Relax on the large balcony with views of the garden and lake, or dine on the suite's private sun terrace.

 2 Adults



ISHQ SUITE


The Ishq Suite at Aathma Colombo House is 40 sqm in size and situated on the first floor of the hotel. The glass sliding doors open to a large balcony overlooking the lake and the property's stunning garden. The suite comes equipped with a super-king size bed, rain shower, bathtub, mini fridge and flat screen TV.

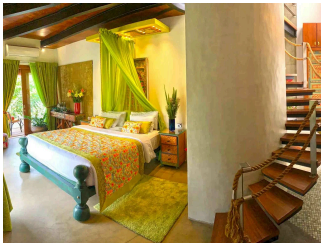
 2 Adults



MAHARANI SUITE


The Maharani Suite at Aathma Colombo House is 60m2 in size and situated on the 1st floor of Aathma's Lake House. The glass sliding balcony doors reveal stunning panoramic views across the Diyawanna Lake. The suite comes equipped with a super-king size bed, whirlpool bathtub, dual bathroom sinks, separate seating space, mini fridge and flat screen TV.

 2 Adults



RAJKUMARI SUITE


The Rajkumari Suite at Aathma Colombo House is 70m2 in size and located on the 1st floor of Aathma's Lake House. The suite features an upper mezzanine floor with an additional king size bed, making it perfect for families or groups. The mezzanine can also be used as a lounge area for couples, as there is ample seating space and a flat screen TV. Large balconies on both floors provide breathtaking panoramic views across the Diyawanna Lake. The suite's open-plan bathroom boasts a large whirlpool bathtub and hidden rain shower.

 2 Adults



TANTRA SUITE

The Tantra Room at Aathma Colombo House is 35 sqm in size, and is situated on the 1st floor of the hotel's garden annex. The large sliding windows provide ample natural light and allow stunning views of the garden and lake. The room comes equipped with a giant Jacuzzi bathtub, rain shower, super-king size bed, mini fridge and flat screen TV.

 2 Adults



AJNA SUITE


The Ajna Suite at Aathma Colombo House is 40 sqm in size and situated on the ground floor of the hotel. The glass sliding doors open to the dining veranda and garden. The rear opens to a private reading room. The suite comes equipped with a super-king size bed, sky-high rain shower, mini fridge and flat screen TV.

 2 Adults



RAJPUT ROOM


The Rajput Room at Aathma Colombo House is 35 sqm in size and located on the 2nd floor of Aathma's Lake House. The room's large window provides views of the garden and lake, and its position within the property enables easy access to Aathma's huge roof terrace. The room features a king size bed, large balcony, seating space, mini fridge and a flat screen TV.

 2 Adults



TULUA ROOM


The Tulua Suite at Aathma Colombo House is 35 sqm in size and situated on the ground floor of the hotel. The glass sliding doors open onto the dining veranda and garden. The rear opens to a private reading room. The room comes equipped with a King Size bed, sky-high rain shower, mini fridge and flat screen TV.

 2 Adults



KAVYA ROOM

The Kavya Room at Aathma Colombo House is 30 sqm in size and situated on the ground floor of the hotel's garden annex. It has sliding glass doors that provide plenty of natural light and easy access to the garden with views over the lake. It has an outdoor reading nook. The room comes equipped with a King Size bed, en-suite bathroom and flat screen TV.

 2 Adults