




 297 Rooms

 3 Restaurants

 4 Star

 2 Bars

## AMBRE

Ambre is a four-star, adults-only all-inclusive resort on Mauritius's wild east coast in Palmar. With 297 rooms set along a 700-meter white sand beach, the resort radiates authentic Mauritian charm. Guests can enjoy decadent dining, a vibrant nightclub, an infinity pool, and access to the legendary Ile aux Cerfs golf course—all in a paradise of golden sands and turquoise waters.

### Suitable For

- Honeymoon Benefits
- All Inclusive
- Adult Focused

### Board Basis Options

- All Inclusive
- Half Board
- Full Board

## FACILITIES



WATER SPORTS



INDOOR SPORTS



GOLF FACILITIES

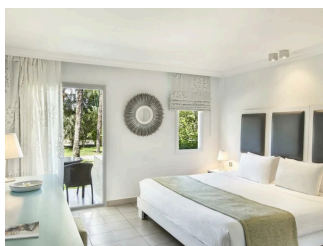


SPA



GYM

## ACCOMMODATIONS



### *SUPERIOR GARDEN*

Situated on the ground floor, first floor and the second floor these rooms come with a king-sized bed, a balcony or terrace and good-sized living space. Guests can enjoy the stunning scenery with a garden-view and a short walk to the beach.

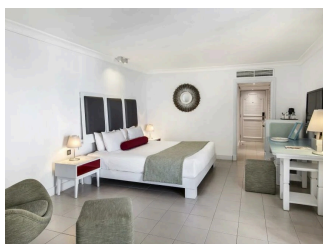
 2 Adults



### *SUPERIOR SEA-FACING*


Situated in the northern or southern wing and on the first floor or second floor, the room comes with the option of twin or king-size beds and can include one extra bed.

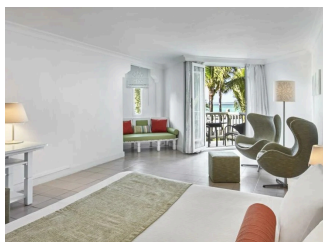
 2 Adults



### *DELUXE SEA-FACING*

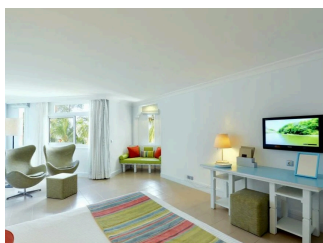
Set on the first floor or the second floor, these rooms come with king or twin beds that are sea-facing.

 2 Adults



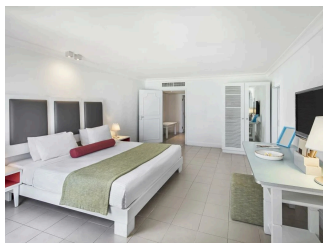
### *DELUXE SEA-FACING - TERRACE / BALCONY*

These Deluxe Sea-Facing rooms are situated on the ground floor or on the first floor. They include king-sized or twin beds that look out to the Indian Ocean. They also include a good-sized terrace or balcony for guests to gaze out to the crystal Mauritian waters. Ambre has 5 fully adapted rooms available in the Deluxe Sea-Facing Rooms that have accessible equipment e.g. a ramp for wheelchair users. They also are equipped with grab bar in the showers, for people who need it.



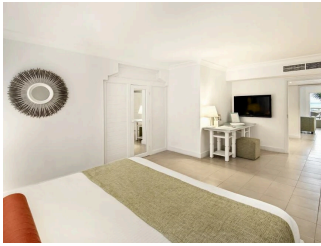
### *DELUXE BEACH ROOM*

Situated on the ground floor or the first floor, these rooms are equipped with a king-sized or twin beds. The Deluxe Beach Rooms are sea-facing and include a good-sized balcony or terrace overlooking the beautiful Mauritian beaches.




### *HONEYMOON SUITE*

These suites are situated on either the ground floor or first floor: ideal for honeymooners, with a separate shower and bathtub. These rooms are also sea-facing and include a balcony or terrace. They also have a romantic living space and the option of room service.



### *AMBRE SUITE*

These suites can accommodate a maximum of 3 people, with an additional bed in the living room. Each room is equipped with a good-sized balcony that shows off the stunning Indian Ocean.

 2 Adults




### *COURTYARD ROOMS*

Situated on the ground floor, first floor or the second floor, these rooms are 17m2 in size. And can accommodate a maximum of 2 guests. These rooms are also located at the south wing of the hotel, giving guests a more tranquil place to relax.



### *DELUXE SUITE*

 2 Adults

---

## FOOD AND DRINK

### RESTAURANT



### *INDIGO*

Here you will find a relaxed atmosphere, live cooking stations and hearty themed buffets. Serving breakfast lunch and dinner

### BARS



### *LA PLAGE*





## A LA CARTE SEAFOOD AND GRILLS RESTAURANT

Some photos are non-official images and are used for representative purposes.

### GALLERY

