



 5 Rooms

 1 Restaurants

 5 Star

 1 Bars

CAMELLIA HILLS

HATTON, CENTRAL HIGHLANDS, SRI LANKA

Live the life of a modern-day tea planter at Camellia Hills, a luxurious five-bedroom boutique bungalow hotel near Dickoya, in Sri Lanka's crisp hill country. From its verdant valley-side perch, views of the mirror-still Castlereagh Reservoir and surrounding tea-wrapped hills are spectacular – drink in the panoramas while relaxing on cushy sofas warmed by an open fire, dining in the semi open air or swimming lengths of the refreshing garden pool.

Suitable For

- Family & Kids
- All Inclusive
- Buy Outs

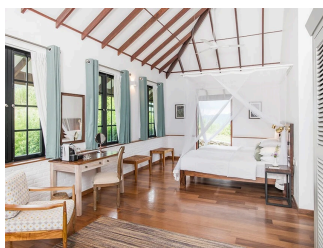
Transfers

- Standard SUV
- Premium SUV
- Deluxe SUV
- Luxury SUV
- Mini Coach
- Medium Coach
- Large Coach

Board Basis Options

- All Inclusive
- Full Board

ACCOMMODATIONS



CAMELLIA BEDROOMS

There are two rooms called Maskeliya & Norton under this category. Maskeliya Twin bedroom with private verandah and views up the hillside towards Maskeliya Norton Double bedroom with views of Castlereagh reservoir (no private verandah)




LAKEVIEW BEDROOMS

There are three rooms called Dickoya, Osbourne & Warleigh under this category. Dickoya Large double bedroom, private verandah, views of Castlereagh reservoir, bathtub, interconnecting room possible Osbourne Large double bedroom, private verandah, views of Castlereagh reservoir, bathtub Warleigh Large lower ground floor double bedroom leading straight onto the lawn, overlooking the pool and views of Castlereagh reservoir.



CAMELLIA BEDROOMS - MASKELIYA

The stylishly furnished Camellia Bedroom, also known as Maskeliya, gazes south easterly across a lush jungle-like hillside and provides luxury accommodation in Hatton with its elongated room and private garden-view terrace. The bedroom is equipped with twin beds, a wardrobe, an armchair, a sofa bed, a desk, and a ceiling fan, and has a private, white-tiled bathroom with a rain shower.

 2 Adults



CAMELLIA BEDROOMS - NORTON



LAKEVIEW BEDROOMS - DICKOYA



LAKEVIEW BEDROOMS - OSBOURNE




LAKEVIEW BEDROOMS - WARLEIGH



LAKEVIEW BEDROOMS NORTON


The Lakeview Bedroom, also known as Norton, offers contemporary and luxury accommodation in Hatton. Furnished with a king-sized bed for indulgently gazing over the Castlereagh Valley and lush tea hills, the bedroom is equipped with a wardrobe, armchair, desk, and ensuite bathroom with a powerful shower and twin wash basins.

 2 Adults



LAKEVIEW SUITES DICKOYA


The Dickoya Suite is the perfect cosy retreat for two, yet ingeniously interconnected to a single room to form a family suite. Equipped with a king-sized four-poster bed and luxurious amenities, the Dickoya Suite opens onto stunning views of the Castlereagh reservoir and the surrounding tea hills. This space is designed with both privacy and connectivity in mind, making it ideal for those seeking a shared experience without compromising on the privacy of each room.

 2 Adults



LAKEVIEW SUITES OSBOURNE


The Osborne Lakeview Suite is located one level higher, facing the Castlereagh Lake with a king-sized four-poster bed, a sitting area, and an ensuite bathroom with a rain shower and a bathtub. It is unique for its twin aspect mountainside and lake-facing views and has a private decked terrace.

 2 Adults



LAKEVIEW FAMILY SUITE

The Family Suite comprises a master suite with king size bed, an ensuite bathroom with bathtub and an interconnecting room for kids.

 2 Adults



LAKEVIEW SUITE

The opulent Lakeview Suites offer luxury accommodation in Hatton with plentiful private space for guests to relax and soak in the peaceful surroundings. The bedrooms are equipped with king-sized four-poster beds, lavish amenities, and open onto private furnished terraces with stunning views of Castlereagh Reservoir and the surrounding tea hills.

 2 Adults

FOOD AND DRINK

RESTAURANT



THE DINING ROOM

Camellia Hills offers a home-like retreat in Sri Lanka's lush hills, with attentive butler service and personalised fine dining. Enjoy panoramic valley views from the cozy, high-ceilinged sitting room or the breezy lake-facing terrace. The All-Inclusive package covers breakfast, lunch, dinner, and a selection of beverages, including soft drinks, beer, house wine, spirits, and tea or coffee all day.

GALLERY

