



 120 Rooms

 2 Restaurants

 5 Star

 1 Bars

CANOPY BY HILTON SEYCHELLES

MAHE, SEYCHELLES

A contemporary beachfront resort overlooking Anse La Mouche, combining family-friendly facilities with relaxed island design. Features include spa, kids' clubs, dining venues and direct beach access for snorkelling and swimming. Well suited to families and couples seeking a modern, activity-led base.

Suitable For

- Family & Kids
- Honeymoon Benefits
- Wellness Focused
- Beachfront

Board Basis Options

- Breakfast
- Half Board
- Full Board
- All Inclusive

FACILITIES



WATER SPORTS



SPA



KIDS CLUB



YOGA



CONFERENCE FACILITY

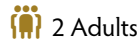


ACCOMMODATIONS



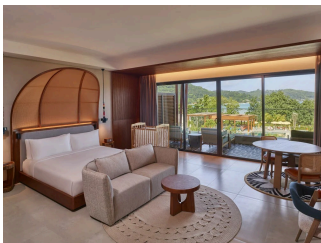
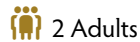
KING DELUXE GARDEN VIEW ROOM

This spacious and comfortable deluxe room features one king-sized bed and offers stunning views of the garden from its private balcony. The room is appointed with the finest furnishings and amenities, including an espresso machine, a walk-in shower, and a welcome gift. Other amenities include an in-room safe and ironing facilities. Ideal accommodation for up to two guests. Balcony, espresso machine, free Wi-Fi, walk-in shower, minibar.



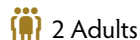
KING DELUXE POOL VIEW ROOM

This spacious and comfortable accommodation features one king-sized bed, a private balcony with pool views, and an espresso machine to enjoy your morning coffee. The bathroom has a walk-in shower, and a welcome gift awaits your arrival. Other amenities include an in-room safe and ironing facilities. This room sleeps two guests in comfort and style. Balcony, espresso machine, free Wi-Fi, walk-in shower, minibar.



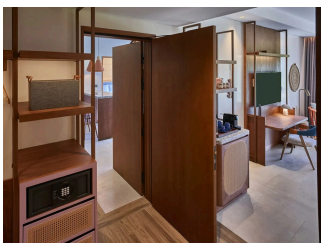
JUNIOR SUITE

Relax in this tranquil suite, which features one king-sized bed. Enjoy extra space in the living area with a sofa and a balcony with sun beds. Enjoy a meal at the dining table, that seats 4. Other amenities include an espresso machine, a walk-in shower in the bathroom, a welcome gift, in-room safe, minibar, iron, and ironing board. With a rollaway bed, this suite can sleep up to 3 guests.



ONE BEDROOM SUITE

Settle into this spacious and luxurious suite, which features a king-sized bed in the bedroom and a sofa bed in the living area. The suite also has a separate bathroom for guests, as well as a dining table for 4 on the terrace. The bathroom benefits from a walk-in shower and a bathtub.



FAMILY CONNECTING ROOM


Ideal for families, spread out and enjoy this space, which features 2 connecting rooms, one with a king-sized bed and the other with two queen-sized beds. Each room benefits from its own bathroom with a walk-in shower, tv, and balcony.





TWO BEDROOM SUITE

Unwind in this spacious and comfortable suite that features two bedrooms one with one king-sized bed and the other with two queen-sized beds. Each room also has a walk-in wardrobe and its own bathroom with a walk-in shower. The bathroom in the master bedroom also has a bathtub. This suite benefits from a separate living area with a sofa bed and an extra bathroom for guests. Enjoy a meal around the dining table, which seats 8. A 32 sq. m. terrace with sun beds gives you ample outdoor space for relaxing.

 2 Adults



KING ROOM WITH GARDEN VIEW


Relax in this charming room furnished with a one king-sized bed and a spacious walk-in shower as well as a balcony that overlooks the garden. Enjoy a welcome gift, along with convenient amenities including an espresso machine, in-room safe and ironing facilities. Perfect for a delightful stay for two.

 2 Adults



ACCESSIBLE ROOM WITH GARDEN VIEW


This generously sized accessible room boasts a king-sized bed and a private balcony, decked with sun beds for blissful relaxation. The bathroom offers the convenience of a roll-in shower. Enjoy the finer things in life including an espresso machine and a delightful welcome gift. Other amenities include an in-room safe and ironing facilities. Ideal accommodation for up to two guests.

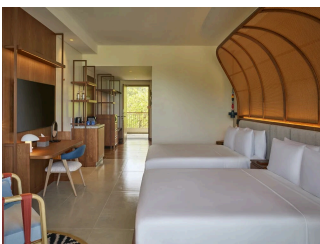
 2 Adults



KING ROOM WITH POOL VIEW


Relax in this stylish king-bedded room with stunning views of the pool from your private balcony. The room is complimented with a spacious walk-in shower and an espresso machine for those early-morning caffeine fixes. Receive a specially curated welcome gift upon arrival. Other amenities include an in-room safe and ironing facilities. This room sleeps two, making it the perfect place to unwind and reconnect.

 2 Adults




QUEEN BEDROOM WITH GARDEN VIEW

A delightful room with two queen-sized beds, offering serene garden views from the balcony. Enjoy the convenience of an espresso machine, an expansive walk-in shower, and thoughtfully curated welcome gifts. Other amenities include an in-room safe and ironing facilities. The room accommodates up to two guests.

 2 Adults




KING ONE BEDROOM APARTMENT WITH NATURE VIEW

 2 Adults




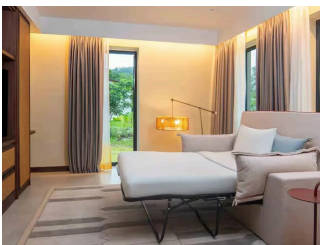
KING ONE BEDROOM APARTMENT WITH PRIVATE POOL

 2 Adults




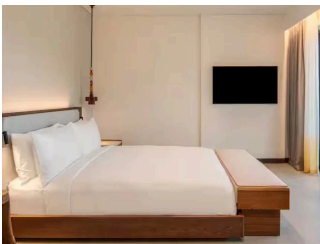
TWO BEDROOM APARTMENT WITH NATURE VIEW

 2 Adults




TWO BEDROOM APARTMENT WITH PRIVATE POOL

 2 Adults




THREE BEDROOM APARTMENT WITH NATURE VIEW

 2 Adults



QUEEN BEDROOM WITH POOL VIEW

 2 Adults

FOOD AND DRINK

RESTAURANT



AVOCET

Avocet is the enchanting All Day Dining restaurant where guests can indulge in the fusion of French and Creole flavours. They can begin their day with a breakfast buffet, featuring a range of delectable options, complemented by a la carte dishes. For lunch, savour a diverse selection of a la carte offerings. As evening falls, dinner brings a hybrid concept, offering a blend of buffet delights and a la carte creations.

BAR



SEGA BAR

GALLERY



