



 27 Rooms

 1 Restaurants

 5 Star +

 1 Bars

## CEYLON TEA TRAILS

### HATTON, CENTRAL HIGHLANDS, SRI LANKA



Ceylon Tea Trails is a Relais & Chateaux hotel located in Hatton area. There are 05 bungalows consists of 27 rooms & suites. Summerville bungalow, Castlereagh bungalow and Dunkeld bungalow overlook the Castlereagh lake, Norwood bungalow is at the other end of the valley and Tientsin is in the next valley. Each house comes with its own chef, butler and houseboys and 5 or 6 rooms each. Summerville has the air of a country cottage. Built 1923, Altitude 4000 ft. High above the lake at the edge of a tea plantation, Summerville stands sentinel. This five-room bungalow enjoys magnificent views of the water and beyond to tea planted mountains in the distance. Castlereagh boasts an eclectic style of its own. Built 1925, altitude 4025 ft. Travelers approaching Castlereagh from the road can glimpse tantalizing views across the lake of this magnificent symbol of the glory days of colonial life. Dunkeld offers a panoramic view of the lake. Built 1925, altitude 4750 ft. Poised high above Castlereagh lake, the bungalow looks down on the verdant tea fields of Dunkeld estate and the tea factory, with spectacular views of the Great Western mountain range. Norwood abounds with 50's character. Built 1890, rebuilt 1950, altitude 4300 ft. The bungalow at Norwood commands a fine view of the eastern end of the Bogawantalawa valley and rests in the shelter of one of the finest bamboo stands to be found anywhere. High Colonial is the perfect way to describe Tientsin. Built 1888, Altitude 4600 ft. Step into the world of Tientsin and step back in time. Named after the Chinese village from which the original tea seedlings came, this very British residence is a historical landmark.

#### Suitable For

- Family & Kids
- Honeymoon Benefits

#### Transfers

- Standard SUV
- Deluxe SUV

- Adventurous
- All Inclusive
- Big Residences
- Buy Outs

- Premium SUV
- Luxury SUV
- Mini Coach
- Medium Coach
- Large Coach

## Board Basis Options

- All Inclusive

---

## ACCOMMODATIONS



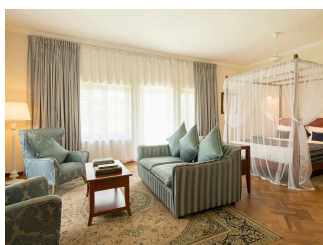
### *LUXURY ROOM*

Luxury Rooms average 40 square metres a bedroom with king or twin beds, bathroom with twin vanities, a bath & walk-in rain shower.



### *GARDEN SUITE*

Garden Suites range average 50 square metres and offer a bedroom with four poster king bed, a bathroom with twin vanities, a bath & walk in rain shower and a private garden.



### *MASTER SUITE*

Master Suites range average 70 square metres and offer a king bed, a separate living room, bathroom with twin vanities, a bath & walk in rain shower and a private garden.



### *OWNER'S COTTAGE*

The Owner's Cottage at Dunkeld bungalow is a romantically secluded standalone bungalow with lake views, heated outdoor hot tub, master bedroom with king bed, beautifully furnished living room, verandah with spectacular tea field and lake view.



GALLERY

