



 72 Rooms

 2 Restaurants

 5 Star

 2 Bars

CURTAIN BLUFF

SAINT MARY, ANTIGUA AND BARBUDA

Curtain Bluff is one of Antigua’s most established luxury resorts, set between two distinct beaches on the island’s southern coast. It suits active couples and families, with strong tennis, watersports and wellness facilities. The atmosphere is classic Caribbean luxury with a long-standing reputation for consistency. A dependable choice for clients seeking tradition, service and a strong activity offering.

Suitable For

- Family & Kids
- All Inclusive
- Wellness Focused

Board Basis Options

- All Inclusive

FACILITIES



SCUBA DIVING



SPA



KIDS CLUB



YOGA



GYM



WINE CELLAR



TENNIS COURT

NON-MOTORISED
WATER SPORTS


MOTORISED
WATER SPORTS

ACCOMMODATIONS



DELUXE ROOM OCEAN VIEW (UPPER FLOOR)

Located on 2nd floor overlooking the surf beach are our 9 ocean view junior suites. The serene interiors are outfitted in soft blues and greens that mirror the adjacent water, which glitters through the floor-to-ceiling glass doors. Grand marble and white-tile bathrooms feature double sinks, expansive showers ONLY, MAX occupancy 3 persons

 2 Adults



DELUXE ROOM BEACHFRONT (GROUND FLOOR)

Located just a stone's throw from the water on the resort's surf beach are the 9 ground floor deluxe rooms. The serene interiors are outfitted in soft blues and greens that mirror the adjacent water, which glitters through the floor-to-ceiling glass doors. Grand marble and white-tile bathrooms feature showers only, MAX 3 persons

 2 Adults



BLUFF ROOM


Experience blufftop luxury from the comfort of our newly renovated bluff rooms. Each room features a king-size bed, freestanding tub, large terrace with daybed and incredible views of the turquoise waters below. For families requiring two bedrooms, the bluff room can be added to a one-bedroom bluff suite.

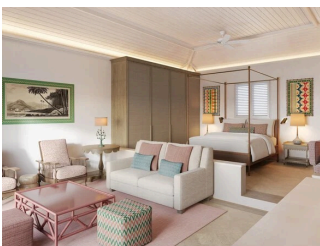
 2 Adults



JUNIOR SUITE OCEAN VIEW (UPPER FLOOR)

Located on 2nd and 3rd floors overlooking the surf beach are the 23 ocean view junior suites. The serene interiors are outfitted in soft blues and greens that mirror the adjacent water, which glitters through the floor-to-ceiling glass doors. Grand marble and white-tile bathrooms feature double sinks, expansive soaking tubs and showers. Max occupancy 4 pax.

 2 Adults



JUNIOR SUITE BEACHFRONT (GROUND FLOOR)

Located just a stone's throw from the water on the resort's surf beach are the 17 ground floor junior suites. The serene interiors are outfitted in soft blues and greens that mirror the adjacent water, which glitters through the floor-to-ceiling glass doors. Grand marble and white-tile bathrooms feature double sinks, expansive soaking tubs. Max occupancy 4 persons.


 2 Adults



1-BEDROOM BLUFF SUITE

Overlooking our surf beach from their perch atop the bluff are our five one- and two-bedroom bluff suites. These light and airy rooms are split across three spacious levels outfitted with natural wood and sea-grass furniture. The three-walled living room offers the best of indoor-outdoor living, opening onto a garden patio with relaxing daybed where you'll enjoy dozing off to the sound of the waves. This room is not fully enclosed, and is open-air on the side with the garden patio. Upstairs, you'll find a breakfast nook and dining terrace, beyond which is the bedroom with an ensuite bath and adjoining

oceanfront patio.

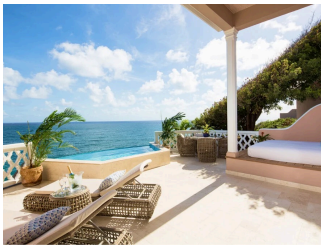
 2 Adults



2-BEDROOM BLUFF SUITE


Overlooking our surf beach from their perch atop the bluff are our five one- and two-bedroom bluff suites. These light and airy rooms are split across three spacious levels outfitted with natural wood and sea-grass furniture. The three-walled living room offers the best of indoor-outdoor living, opening onto a garden patio with relaxing daybed where you'll enjoy dozing off to the sound of the waves. This room is not fully enclosed, and is open-air on the side with the garden patio. Upstairs, you'll find a breakfast nook and dining terrace, beyond which is the bedroom with an ensuite bath and adjoining oceanfront patio.

 4 Adults



TERRACE POOL SUITE


Our terrace suite's secluded location at the top of the bluff and breathtaking views of the sea below make it the most popular choice for newlyweds. White walls, sea-blue fabrics, bespoke furnishings and rich, natural woods give the room a sense of calm and timeless sophistication. Its 567-square-foot terrace with infinity-edge plunge pool and comfortable daybed is your private sanctuary for intimate relaxation and dining.

 2 Adults



CLIFF POOL SUITE


Tucked into the hillside, our cliff suite features a spacious living room that opens onto a large patio with an infinity soaking pool and unobstructed views of Grace Bay beach. Its separate bedroom is elegantly appointed with a king-size bed, marble bathroom and second terrace overlooking the surf beach.

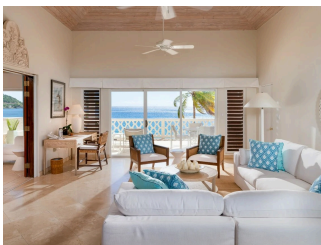
 2 Adults



1-BEDROOM MORRIS AND GRACE BAY POOL SUITES

This pair of generously scaled suites occupies the third floor of a Caribbean-style villa directly on the sands of the resort's surf beach. Both suites are luxuriously outfitted with blue-marble bathrooms, colonial furniture, richly colored fabrics and lush palms. The bedroom and adjoining living room open onto a sweeping veranda with lounge chairs and a private plunge pool, the perfect site for private sunbathing or romantic cocktails under the stars. The Grace & Morris Bay suites can be linked to a junior suite to create a two-bedroom suite. Extended groups and families can reserve the entire floor (four bedrooms).

 2 Adults




2-BEDROOM MORRIS & GRACE BAY POOL SUITE

This pair of generously scaled suites occupies the third floor of a Caribbean-style villa directly on the sands of the resort's surf beach. Both suites are luxuriously outfitted with blue-marble bathrooms, colonial furniture, richly colored fabrics and lush palms. The bedroom and adjoining living room open onto a sweeping veranda with lounge chairs and a private plunge pool, the perfect site for private sunbathing or romantic cocktails under the stars. The Grace & Morris Bay suites can be linked to a junior suite to create a two-bedroom suite. Extended groups and families can reserve the entire floor (four bedrooms).

 4 Adults



TWO BEDROOM LUXURY SUITE WITH PLUNGE POOL

 4 Adults

FOOD AND DRINK

RESTAURANTS



TAMARIND RESTAURANT

Creative international cuisine. Strict Dress code



SEAGRAPE RESTAURANT

Sea Grape offers relaxed beachfront dining in an open-air setting. Lunch features an extensive daily menu, including a weekly beach barbecue with live steel-drum music, while bento box service is available to beach and poolside cabanas from 12:00pm to 4:00pm. On select evenings, guests aged 13 and over can enjoy dinner, with a creative blend of Italian and Antiguan cuisine, including fresh seafood and seasonal dishes. A smart-casual dress code applies.

GALLERY



