



 175 Rooms

 4 Restaurants

 5 Star

 2 Bars

# DINAROBIN BEACHCOMBER GOLF RESORT & SPA

## RIVIÈRE NOIRE DISTRICT

---

### Board Basis Options

- Bed & Breakfast
  - Half Board
- 

### ACCOMMODATIONS



#### *ZEN SUITE*

At a large 65m<sup>2</sup> in space, these suites can accommodate up to three adults. This intimate sea-facing suite sits in a private area of the resort reserved for adults only. It offers a luxury romantic beach retreat for couples with a fantastic view onto lush tropical gardens. The sizeable bedroom is ideal for two, equipped with an en suite bathroom that features a walk-in shower, bathtub and wardrobe. Guests also can enjoy the incredible sunsets from the comfort of their private terrace.



#### *ZEN SUITE BEACHFRONT*

These suites offer guests the perfect view of the beachfront, as well as a large 65m<sup>2</sup> space. The large bedroom opens onto the guests own private terrace where couples can enjoy the unique Mauritian sunsets. Residents of this suite have complimentary access to the exclusive Club at Dinarobin that offers services akin to those of Executive Floors or VIP lounges.

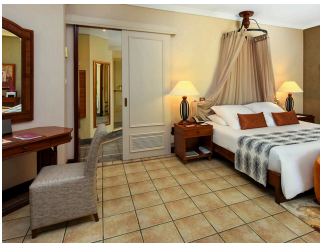


### SENIOR ZEN SUITE

The large windows in this suite allow the natural light to flood the indoor living area, creating a fresh and romantic atmosphere. Guests can relax in luxury in the bedroom and a spacious en-suite bathroom. Guests will also indulge in the room's exclusive amenities and privileges of the Club at Dinarobin. The Club is based on the worldwide concept of offering Executive Floors and VIP lounges.




### JUNIOR SUITE



### SENIOR SUITE




### JUNIOR SUITE BEACHFRONT

 2 Adults



### DINAROBIN VILLA

Bordered by a magnificent white beach, the Dinarobin Villas are located on the most spectacular part of Le Morne peninsula, offering the perfect holiday setting. The seemingly endless beach invites guests for a leisurely stroll before taking a refreshing swim in their private pool. Fringed by palm trees, an elegant gazebo houses a relaxing dining area where guests can enjoy al-fresco dining at any time of day or night. An outdoor bar and barbecue area complete the setting for the ideal island living experience and quality moments together.

 8 Adults

GALLERY

