



 40 Rooms

 5 Restaurants

 4 Star +

 5 Bars

# DOUBLETREE BY HILTON WEERAWILA RAJAWARNA RESORT

## WEERAWILA, SOUTH, SRI LANKA

Set on the shores of Lake Weerawila in southern Sri Lanka, DoubleTree by Hilton Weerawila Rajawarna Resort is a contemporary lakeside resort positioned close to some of the country's most visited national parks. The setting is open and scenic, with a strong focus on space, events and easy access to safari experiences. With well-appointed rooms, a large-scale events venue and wellness facilities, it works well for both leisure stays and incentive-style groups combining nature and comfort.

### Suitable For

- Family & Kids
- Honeymoon Benefits
- Adventurous
- Wellness Focused
- National Parks

### Board Basis Options

- Breakfast
- Half Board
- Full Board
- Full Board & Safari

## FACILITIES



SPA



KIDS CLUB



YOGA



GYM

CONFERENCE  
FACILITY


---

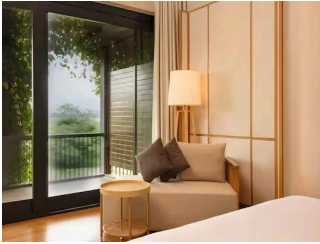
## ACCOMMODATIONS



### *DELUXE GARDEN VIEW ROOM WITH TERRACE*


Located on the ground floor, this king room offers views of tropical gardens from the private terrace. Unwind on the sofa and watch the HDTV and stay connected with WiFi. Enjoy direct access to the pool and listen to vibrant birdsongs in this 55 sq. m./592 sq. ft ground floor room. Other amenities include outdoor seating, flat waterfall shower, air conditioning, mini bar, and safety deposit box.

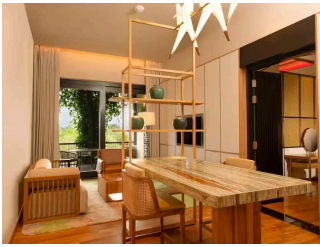
 2 Adults



### *KING/TWIN DELUXE ROOM WITH BALCONY*


Admire the scenic garden view from the private balcony in this king room. Unwind on the sofa and watch the HDTV and stay connected with WiFi in this 55 sq. m./592 sq. ft in this second floor room. The elegant bathroom features a rain shower. Other amenities include outdoor seating, flat waterfall shower, air conditioning, mini bar, and safety deposit box.

 2 Adults



### *KING ONE BEDROOM SUITE WITH BALCONY*


Take in breath taking views of the garden and pool from the private balcony in this spacious suite spread over 108 sq. m./1,163 sq. ft. Unwind in the separate living area watching HDTV and stay connected with WiFi. This suite features a king bedroom, a separate dining area, a pantry with microwave, large private balcony with outdoor seating and mini bar as well as a powder room. Refresh in the elegant bathroom which boasts a bathtub / shower combination and flat waterfall shower. Other amenities include air conditioning, powder room, and safety deposit box.

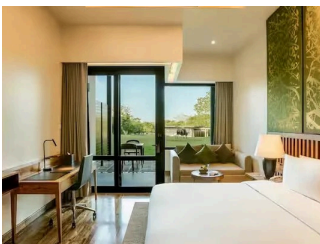
 2 Adults



### *FOUR BEDROOM PRESIDENTIAL VILLA WITH BALCONY*


Experience true relaxation in this elegant and expansive suite spread over 3 stories boasting an area of 466 sq. m./5,016 sq. ft. This suite features a rooftop whirlpool tub, plunge pool, private gym, rooftop deck, steam room, separate living and dining area, private balconies, deck area with outdoor furniture and 4 bedrooms. Refresh in the elegant bathrooms with bathtub or shower combinations or whirlpool. Enjoy watching the HDTV and stay connected with WiFi.

 2 Adults



### *KING/TWIN ACCESSIBLE ROOM*

Located on the ground floor, this twin room has a convenient location close to the lobby and wheelchair accessible amenities including a roll-in shower. Enjoy views of tropical gardens from the private terrace. Unwind and watch the HDTV and stay connected with WiFi. Other amenities include a grab rails, air conditioning, and safety deposit box.

 2 Adults

## FOOD AND DRINK

### RESTAURANTS



#### *HORNBILL*

Hornbill poolside bar & lounge offers breathtaking views of the lake along with delicious food and tropical drinks. Whether guests are relaxing by the pool, enjoying a carefree evening or a romantic night under the stars, Hornbill offers a memorable experience for everyone.



#### *NIGHTJAR*

Toast your day's adventures and unwind in style with the rhythmic music at Nightjar, the rooftop bar. Sip on your favourite signature cocktails and choose from a menu of light bites in a lively atmosphere.



#### *REDSHANK*

Relax and take in the scenic rooftop views of Lake Weerawila while enjoying gourmet seafood cuisine. The culinary experts bring out the best from Sri Lanka's famed crab, shrimp, lobsters, mussels, squid and fish.



#### *SPOONBILL*

The premier all-day dining restaurant serves a creative blend of international and continental specialities, featuring locally sourced fresh produce, in a luxurious, rustic atmosphere. Complement your meal with a selection from our extensive list of international wines.



#### *TURNSTONE*

Turnstone offers a luxurious yet cosy setting with plush indoor seating and a wide array of drinks from cold brew coffee to unexpected cocktails. Enjoy a round of eight-ball pool and the breezes of Lake Weerawila while admiring the modern architecture.

GALLERY

