



 181 Rooms

 3 Restaurants

 5 Star

 3 Bars

## FOUR SEASONS RESORT AND RESIDENCES ANGUILLA

**BARNES BAY, 2640, ANGUILLA**

When you arrive in Anguilla, the stresses of everyday life are left far behind. Set along the island's northwest shore, our Forbes Travel Guide Five-Star Resort is the perfect place to make memories with friends and family. Settle into one of our spacious accommodations – 80 percent with ocean views – and fill your days with water sports, relaxing pool time and exotic dining experiences.

---

### Suitable For

- Family & Kids
- Adventurous
- Wellness Focused

### Board Basis Options


- Room Only
- Breakfast

## ACCOMMODATIONS



### RESORT VIEW ROOM


Ideal for guests on the go, these spacious rooms offer an outdoor sundeck with chaise lounges and views of the Resort grounds. Marble bathroom featuring double sinks, soaking tub and walk-in shower. Total of 618 sq. ft. (57 sm.), including 495 sq. ft. (46 sm.) indoors and 123 sq. ft. (11 sm.) balcony. Building 37, floors 1 – 4.

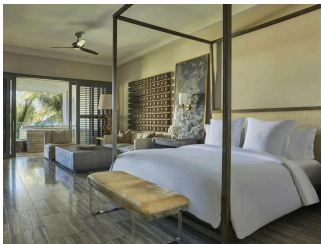
 2 Adults



### OCEAN VIEW STUDIO ROOM KING


Welcome to your private sanctuary – complete with an oceanside plunge pool, a sundeck and custom-designed furniture. Marble bathroom with double sinks, soaking tub and walk-in shower. Total of 684 sq. ft. (64 sm.), including 493 sq. ft. (46 sm.) indoors and 191 sq. ft. (18 sm.) balcony. Buildings 32, 33, 35 and 36, floors 1 – 4

 2 Adults



### DELUXE OCEAN VIEW STUDIO ROOM


Perfect for couples, with a private sundeck, plunge pool, indoor living space and, of course, romantic sea views. Marble bathroom featuring double sinks, soaking tub and walk-in shower. Total of 869 sq. ft. (81 sm.), including 660 sq. ft. (61 sm.) indoors and 380 sq. ft. (35 sm.) balcony. Buildings 40, 42 and 43.

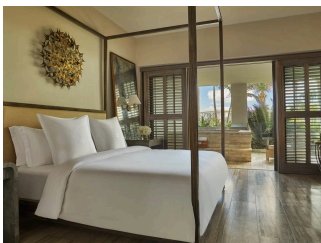
 2 Adults



### OCEAN VIEW STUDIO ROOM QUEEN

Welcome to your private sanctuary – complete with an oceanside plunge pool, a sundeck and custom-designed furniture. Marble bathroom with double sinks, soaking tub and walk-in shower. Total of 684 sq. ft. (64 sm.), including 493 sq. ft. (46 sm.) indoors and 191 sq. ft. (18 sm.) balcony. Buildings 32, 33, 35 and 36, floors 1 – 4

 2 Adults



### ONE BEDROOM OCEAN-VIEW SUITE

Take a dip in your private plunge pool or soak up the sun and ocean views from the balcony of these light and airy suites. Marble bathroom featuring double sinks, deep soaking tub and oversized walk-in shower. Total of 1,268 sq. ft. (118 sm.), including 888 sq. ft. (88 sm.) indoors and 380 sq. ft. (35 sm.) balcony. Buildings 32, 33, 35 and 36.

 2 Adults

## FOOD AND DRINK

### RESTAURANTS



#### *SALT*

Contemporary Seafood and Meats. Take in the views of Barnes Bay and Meads Bay from the restaurant's blufftop location as you dine on fresh breakfasts or vibrant seafood dinners.



#### *HALF SHELL BEACH BAR*

Take in the views of Barnes Bay and Meads Bay from the restaurant's blufftop location as you dine on fresh breakfasts or vibrant seafood dinners.



#### *BAMBOO BAR AND GRILL*

Soak up the sun during a leisurely lunch with beach cocktails, cold beer or crisp wines while perched along Meads Bay.

### BARS



#### *SUNSET LOUNGE*





CAFÉ NAI

## GALLERY

