



🏠 12 Rooms

🍴 1 Restaurants

★ 4 Star

🍷 1 Bars

# GALLE FORT HOTEL

## GALLE, SOUTH, SRI LANKA

Set within the historic Galle Fort, a UNESCO World Heritage Site, Galle Fort Hotel is an 11-suite boutique property housed in a restored Dutch-era building. The experience is rooted in heritage and character, with a strong sense of place shaped by its storied past and Fort setting. A standout feature is its destination bar and dining offering, including a focus on local arrack. A strong fit for clients seeking a design-led, culturally rich stay in the heart of Galle.

### 🏠 Suitable For

- Honeymoon Benefits
- Buy Outs

### 🍴 Board Basis Options

- Bed & Breakfast
- Half Board
- Full Board

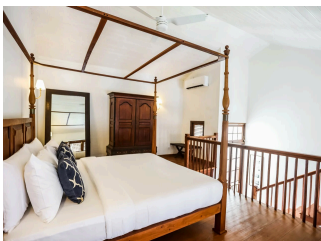
## ACCOMMODATIONS



### GARDEN ROOM

Ground level, perfect for two with easy access to the frangipani-scented courtyard and swimming pool.

👤 2 Adults



### LOFT SUITE


Loft Suite: Duplex with sitting area and bathroom downstairs, and a king-size bed upstairs. Veranda offers courtyard and pool views.

👤 2 Adults



### *LIBRARY SUITE*


Ideal for two, with a large sofa and oversized bathtub in the main room. Antique wood features in the step-down bathroom.

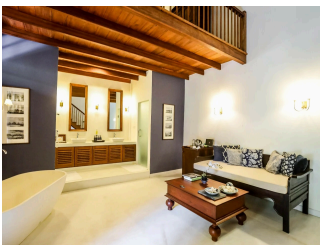
 2 Adults



### *PORCELAIN SUITE*


Porcelain Suite: Features tile/marble floor, Dutch shuttered windows, antique cabinets, and a decadent four-poster bed.

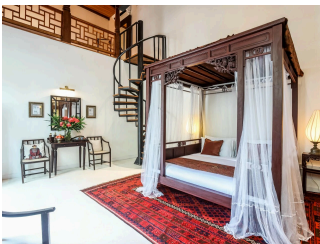
 2 Adults



### *TERRACE SUITE*


Duplex with sitting area, bathroom, and freestanding bathtub downstairs. Upstairs bedroom overlooks terrace and pool.

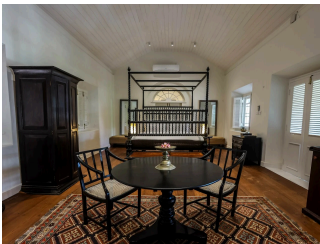
 2 Adults



### *ADMIRAL CHENG HO SUITE*


Antique Chinese opium king bed on ground floor, with a spiral staircase leading to a mezzanine with a queen-size bed.

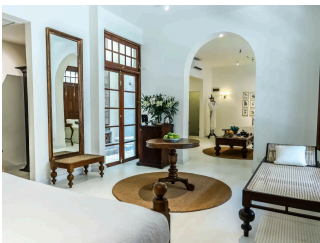
 2 Adults



### *GRAND APARTMENT ROOM*

Top floor view of pool and courtyard, featuring antique chests, cabinets, and a Dutch spiral four-poster bed.

 2 Adults



### *GARDEN SUITE*


Ground level with pool view, featuring a living room, separate bedroom, and bathroom with walk-in shower.

 2 Adults



### GRAND APARTMENT SUITE

Grand Apartment Suite: Top floor with pool and courtyard view, offering a king-size bedroom, grand seating area, and bathroom with walk-in shower and separate tub.

 2 Adults

---

## FOOD AND DRINK

### RESTAURANT



### ROPEWALK

Ropewalk at Galle Fort Hotel is a signature addition to its Food & Beverage offerings, celebrated as Sri Lanka's first arrack-specialty bar. Guests can enjoy a thoughtfully curated menu of innovative cocktails and modern Sri Lankan cuisine in a charming colonial-inspired setting. Perfect for a relaxed yet refined experience, Ropewalk beautifully complements the historic charm of the Galle Fort Hotel.

---

## GALLERY

