



 9 Rooms

 Restaurants

 3 Star

 Bars

# HANNEMAN HOLIDAY RESIDENCE

## Suitable For

- Family & Kids

## Board Basis Options

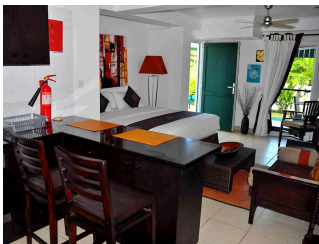
- Breakfast

## ACCOMMODATIONS



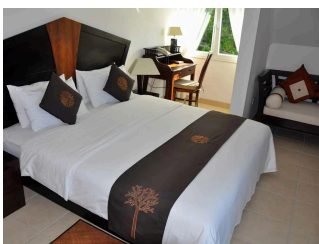
### *TWO BEDROOM DUPLEX APARTMENT*

The Duplex consists 2 air-conditioned bedrooms each with en-suite bathroom with shower located on the first floor. The master bedroom has a king-size double bed and the second bedroom twin beds. Each room has a room safe, ceiling fan and a private terrace. Downstairs there is a large open-plan full equipped kitchen including dishwasher and fridge/freezer, with a spacious living and dining area with flat-screen TV, ceiling fan, guest toilet, washing machine with integrated tumble dryer, and a furnished balcony of 20 sqm catering for outdoor dining and relaxation.



### *ONE BEDROOM TERRACE STUDIO*

The Terrace Studio consists a king-size bed with air-conditioning and ceiling fan, lounge area with small library, open-plan large kitchenette which is fully-equipped including dishwasher and washing machine. There is a separate bathroom with shower and 220V razor plug. The Terrace Studio opens out onto a small garden with outdoor dining table with sun umbrella and beach beds overlooking the pool area.



### *ONE BEDROOM PENTHOUSE APARTMENT*

The Penthouse with 1-bedroom consists an open-plan fully equipped kitchenette with dishwasher, 4 plate stove, fridge/freezer and a dining area. The separate air-conditioned bedroom with en-suite bathroom and shower, has a flat-screen TV, study corner, small balcony, sitting area and storage room. There is a washing machine with collapsible drying rack.



### *TWO BEDROOM PENTHOUSE APARTMENT*

The Penthouse with 2-bedrooms is a spacious 145 sqm unit on one level with a separate fully-equipped kitchen, living and dining room with flat-screen TV, ceiling fan, guest toilet and furnished balcony of 18 sqm. There is a separate laundry room with washing machine and integrated tumble dryer. The large master bedroom with king-size bed is air-conditioned with sitting area, study corner, storage room, private terrace and en-suite bathroom and shower. The second air-conditioned bedroom also has a king-size double bed with private terrace and en-suite bathroom with shower.

---