



 652 Rooms

 3 Restaurants

 4 Star

 1 Bars

IMPRESSIVE PUNTA CANA RESORTS & SPAS

DOMINICAN REPUBLIC

Impressive Punta Cana is a waterfront resort located only 25 minutes from Punta Cana International Airport, on the idyllic El Cortecito Beach in the heart of Bávaro. As the preferred resort for families, it offers a sea of entertainment alternatives and fun activities, within the all-inclusive program. It is known for its stunning white sand beach with coconut trees, turquoise water and impressive walkway over the sea. This is the perfect destination for families, couples and groups searching for a place in which to relax and enjoy the sun, beach and endless fun.

Suitable For

- Family & Kids
- All Inclusive
- Wellness Focused
- Honeymoon Benefits

Board Basis Options

- All Inclusive

FACILITIES



SPA



KIDS CLUB



YOGA



GYM

**CONFERENCE
FACILITY**


WINE CELLAR


TEENS CLUB

**NON-MOTORISED
WATER SPORTS**


**MOTORISED
WATER SPORTS**

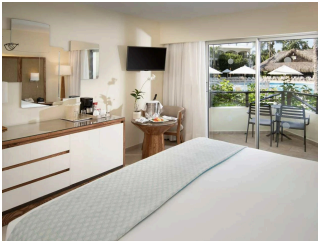
ACCOMMODATIONS



TROPICAL VIEW ROOM


These double rooms have a balcony or terrace with a garden view. They come with air-conditioning, minibar*, iron and ironing board, shower, hairdryer, safety deposit box and tea and coffee-making facilities. They can sleep up to 4 people with a king-size bed or 2 double beds.

 2 Adults



POOL VIEW ROOM


These double rooms have a balcony or terrace with a pool view. They come with air-conditioning, minibar*, iron and ironing board, shower, hairdryer, safety deposit box and tea and coffee-making facilities. They can sleep up to 4 people with a king-size bed or 2 double beds.

 2 Adults



OCEAN VIEW ROOM

These double rooms have a balcony or terrace with ocean view. They come with air-conditioning, minibar*, iron and ironing board, shower, hairdryer, safety deposit box and tea and coffee-making facilities. They can sleep up to 4 people with a king-size bed or 2 double beds.

 2 Adults

FOOD AND DRINK

RESTAURANTS



OPEN SEA (INTERNATIONAL BUFFET)

This spacious buffet restaurant offers a comfortable space where you can enjoy a mix of local and international flavours, including healthy and gluten free options, a pasta station, a huge variety of salads as well as a kid station and a vast of delicious desserts.



YAKIMESHI (ASIAN)

The best of Japanese cuisine at one place! Enjoy delicious sushi rolls and watch an amazing teppanyaki show with family and friends. *Reservation required



VILLA MAGNA (ITALIAN)

Enjoy amazing Italian dishes at Villa Magna. Taste a three-course menu that includes a delicious variety of risottos, pastas, cream soups and more. *Reservation required



ON THE GRILL (STEAKHOUSE)

Right in front of the beach, this amazing restaurant offers a unique space where you will enjoy breakfast during the day and delicious cuts of meats and grilled meat during the night. *Reservation required



ALEBRIJE (MEXICAN)

Dine on flavourful Mexican cuisine in a wonderful setting where guests can sip their favourite wine and make the experience more special. *Reservation required



TAPAS & PIZZA

A unique culinary experience with a fusion of Spanish tapas and delicious Italian cuisine. Explore a blend of flavours that will make a memorable dining experience. *Reservation required



WINE À LA CARTE

Choose from an extensive variety of wines from around the world. Spend an amazing night with the company of family and friends or enjoy a romantic dinner with someone special. *Service not included in the all-inclusive package



THE SNACK TIME PIZZA

Enjoy delicious appetizers like pizzas, hot dogs and hamburgers at Snack Time Pizza, a place where classic flavours speak for themselves.



PALM BEACH COFFEE (COFFEE AND PASTRIES)

Guests can get a cup of their favourite coffee with a tasty dessert any time at Palm and Coffee.

BARS



AMBER - IMPRESSIVE PUNTA CANA LOBBY



AGATA - THEATRE



ÓPALO - DANCE CLUB



TURQUOISE - CENTRAL POOL



TOURMALINE - BEACHFRONT BAR

Some photos are non-official images and are used for representative purposes.

GALLERY



