



4 Rooms

1 Restaurants

4 Star +

1 Bars

ISHQ COLOMBO

COLOMBO, WEST, SRI LANKA

A four-suite private villa in Colombo designed by Channa Daswatta, a protégé of Geoffrey Bawa. Accommodating up to 10 guests, Ishq Colombo blends colonial influences with contemporary restraint, from brushed brass detailing to carefully landscaped gardens. The design references Dutch and British heritage while maintaining a clean, modern execution. A strong choice for exclusive use stays in the city, offering privacy, architectural pedigree and a refined residential feel.

Suitable For

- Wellness Focused
- Cultural
- Buy Outs
- Honeymoon Benefits

Board Basis Options

- Bed & Breakfast
- Bed & Breakfast Plus
- Half Board

FACILITIES



SPA




YOGA

ACCOMMODATIONS



MASTER SUITE 1

Master Suite One is a generous space located on the first floor of our private villa in Colombo. Accented by warm rugs and eye-catching wall hangings, the suite is furnished with a king-sized four-poster bed and has its own living room for you to relax more privately. Balcony railings allow the windows to be opened widely to the balmy outdoors where a view of the swimming pool shimmers below. This suite is also accessorised with a dressing room which leads into a luxurious ensuite bathroom with twin washbasins and a rain shower.

 2 Adults



MASTER SUITE 2


This expansive suite, simply goes on and on. Located just off the first floor sitting area, our second Master Suite is an indulgent cocoon of comfort, space and exclusivity. Enter into an elegant sitting room furnished with a plush sofa, workstation and window seat before continuing down a hardwood corridor to the bathroom (with rain shower) and bedroom where a beautifully dressed king-sized bed awaits. The suite is bathed in light and opens directly onto the sun-kissed roof terrace, which feels like your own private garden.

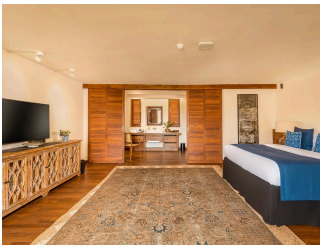
 2 Adults



POOL SUITE


Dips in the swimming pool are hard to resist when staying in our generously sized Pool Suite, which is the only suite located on the ground floor. Sunlight floods the suite through floor-to-ceiling French windows, which open directly onto the courtyard swimming pool. Furnished with a king-sized bed and a plush armchair, this suite also has a large ensuite bathroom with rain shower.

 2 Adults



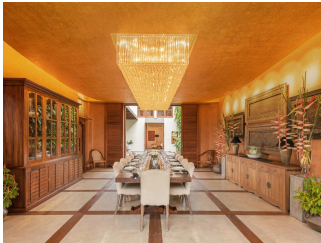
CORNER SUITE

Located on the first floor of the villa, our roomy Corner Suite is a relaxing space for two. From the window, gaze down over the swimming pool or slide open the wooden doors into your ensuite bathroom for a powerful rain shower. Furnished with a king-sized bed, the timber floors and soft Moroccan rugs give this suite a particularly warm and cosy feel.

 2 Adults

FOOD AND DRINK

RESTAURANT



DINING AT ISHQ COLOMBO

A private dining area & a separate breakfast space for guests. Guests are permitted to bring their own alcohol to be served here.

GALLERY

