



 55 Rooms

 1 Restaurants

 5 Star

 1 Bars

JAMAICA INN

ST. ANN PARISH, JAMAICA

Jamaica Inn is a small, elegantly timeless resort located in Ocho Rios, Jamaica. This eight-acre property boasts a 700-foot premier private beach, which is often considered to be the one of the best beaches in the Caribbean. There are sweeping views of the Caribbean Sea from all of Jamaica Inn's 45 suites & 7 cottages. With no TV's, clocks or radios, guests are encouraged to make use of the non-motorised water sports, pampering at the Ocean Spa and daily experiences on and off property. Jamaica Inn has two al-fresco restaurants, with live music every evening. What truly sets Jamaica Inn apart, is the warm, attentive, and authentic service guests receive.

Suitable For

- Honeymoon Benefits
- Adventurous
- Wellness Focused

Transfers

- KIN to JI Car Transfer
- MBJ to JI Car Transfer
- VIP Expedited Service – Fast Track Passes Round Trip to MBJ
- VIP Expedited Service – Fast Track Passes Round Trip to KIN

Board Basis Options

- Breakfast
- Half Board
- Full Board
- All Inclusive
- Full Breakfast

- Continental Breakfast

FACILITIES



GOLF FACILITIES



SPA



YOGA



GYM

**CONFERENCE
FACILITY**

**NON-MOTORISED
WATER SPORTS**

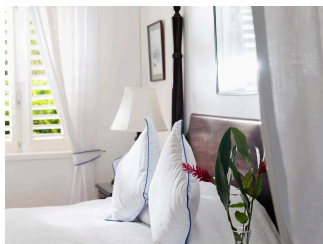
ACCOMMODATIONS



BALCONY SUITE

The upper floor suites offer large balconies and uninterrupted views of the sea, beach, and mountains. Open shutter French doors leading out onto the first-floor balcony, nightly turndown service and blissfully, no TVs, radios or clocks. Elegant antique furniture throughout (except the mini fridge!) and walk-in wardrobes.

2 Adults



DELUXE VERANDAH SUITE

Generous suites with inviting living-room-sized verandas, sea views and direct access to the grounds, immaculate croquet lawn and beach beyond. Open shutter French doors leading out to the veranda, nightly turndown service and blissfully, no TVs, radios or clocks. Elegant antique furniture throughout (except the mini fridge!) and walk-in wardrobes.

2 Adults



PREMIER VERANDAH SUITE

Magnificent suites with private, furnished verandas and ocean or beach views. The Beach Wing suites are located directly on the beach, so you can virtually tumble out of bed and onto a sun lounger. Or, for those who prefer to feed the fish, the West Wing sits directly over the Caribbean Sea. Open shutter French doors leading out onto the veranda, nightly turndown service and blissfully, no TVs, radios or clocks. Elegant antique furniture throughout (except the mini fridge!) and walk-in wardrobes.

2 Adults



COWDRAY SUITE

An especially large, first-floor suite with a separate dressing room, large balcony veranda and sunset views of the sea and mountains. Open shutter French doors leading out onto the large verandah, nightly turndown service and blissfully, no TVs, radios or clocks. Elegant antique furniture throughout (except the mini fridge!) and walk-in wardrobes.

2 Adults



BLUE COTTAGE


A one-bedroom cottage located directly on the beach and panoramic views of the Caribbean Sea. Louvered windows and French doors lead out to the oversized veranda, nightly turndown service and blissfully, no TVs, radios or clocks. Elegant antique furniture throughout (except the mini fridge!) and walk-in wardrobes.

 2 Adults



JAMAICA INN 1 BEDROOM COTTAGE + POOL

The one-bedroom cottages each have an elegant living and bar space, infinity plunge pool, sweeping ocean views and private sea access. With huge sleeping and living areas, their own bar, an exquisite bathroom and outdoor shower, there's everything a guest would need to pamper and unwind in uninterrupted seclusion. Open shutter French doors lead out to the oversized veranda, nightly turndown service and blissfully, no TVs, radios or clocks. Elegant antique furniture throughout (except the mini fridge!) and walk-in wardrobes.

 2 Adults




JAMAICA INN 2-BEDROOM COTTAGE + POOL

These stylish hideaways boast their own infinity plunge pool, elegant living and bar space, captivating views of the Caribbean Sea and exclusive access to the sea or the private beach. Sleep up to four adults in absolute comfort and privacy, with either one or two spacious, airy bedrooms, en-suite bathrooms, a convivial living room and secluded outdoor spaces all around. Located on a private, elevated bluff, our cottages offer absolute tranquillity and uninterrupted views of the sparkling Caribbean. Open shutter French doors lead out to the oversized veranda, nightly turndown service and blissfully, no TVs, radios or clocks. Elegant antique furniture throughout (except the mini fridge!) and walk-in wardrobes.

 4 Adults




COTTAGE 3/COTTAGE 4 (1 BEDROOM SUITE + POOL)

 2 Adults




1 BEDROOM SUITE + POOL

 2 Adults




BEACH BUNGALOW SUITE

 2 Adults



SUITE 21/COTTAGE 7 (1 BEDROOM SUITE + POOL)

The largest suite can be found on a secluded peninsula with its own private grounds, huge oceanfront sundeck, direct access to the sea and a plunge pool. The most private of all the rooms, Suite 21 was the preferred choice of Winston Churchill. Open shutter French doors lead out to the oversized veranda, nightly turndown service and blissfully, no TVs, radios or clocks. Elegant antique furniture throughout (except the mini fridge!) and walk-in wardrobes.

 2 Adults

FOOD AND DRINK

RESTAURANTS



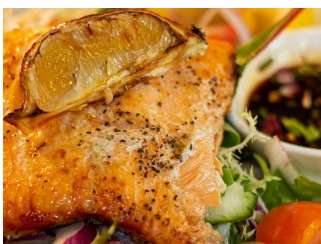
SEA SHANTY

Serves breakfast & lunch. A mix of local and international flavours. Situated directly over the Caribbean Sea.



TEDDY'S GRILL

Located on the beach, this wood fired grill serves home-made pizzas and fresh local favourites. Open for lunch & dinner.



THE TERRACE

Our al fresco dining room serves dinner every evening. Live band every night. International / Jamaican cuisine in a formal setting.

BAR



TEDDY'S BAR

GALLERY



