




 61 Rooms

 2 Restaurants

 3 Star

 1 Bars

JETWING ST. ANDREW'S

NUWARA ELIYA, CENTRAL HIGHLANDS, SRI LANKA

Jetwing St. Andrew's is a luxury hotel located in Nuwara Eliya, Sri Lanka, situated at 10 St. Andrew's Drive. Originally constructed in 1875 as part of a Georgian-style mansion, it has been transformed into a stately Tudor-style hotel that preserves the charm of the colonial era. The hotel features 56 rooms and 5 suites, offering guests a blend of historic ambiance and modern comfort, including one of the oldest snooker tables in Sri Lanka. Dining options include the Old Course Restaurant, specialising in fine dining with a show kitchen and walk-in wine cellar, and the Road Hole Bar, designed as a traditional British pub.

Suitable For

- Family & Kids
- Honeymoon Benefits

Board Basis Options

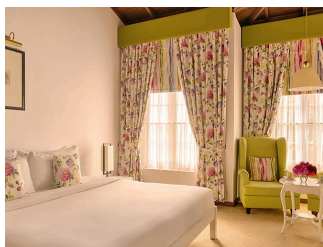
- Bed & Breakfast
- Half Board
- Full Board

ACCOMMODATIONS



SUPERIOR ROOMS

This is the lead in room category at this property.



DELUXE ROOM

There are 7 rooms. Room consists of a separate attic area with two single beds in addition to the king-sized bed



SUITE

There are 4 suites.



GEM SUITE

The Gem Suite features an upper floor, a ground floor living area, and even a plush luxury bathtub within the ensuite bathroom.

FOOD AND DRINK

RESTAURANTS



OLD COURSE RESTAURANT

A fine dining restaurant with a show kitchen and walk-in wine cellar.



THE TEA TERRACE

Indulge in the finest of Ceylon Tea.

BAR



ROAD HOLE BAR

GALLERY

