



 8 Rooms

 3 Restaurants

 5 Star ++

 2 Bars

## KISAWA SANCTUARY

### BENGUERRA ISLAND, MOZAMBIQUE

Kisawa is a combination of 8 one, two and three bungalow residences, positioned within a 300 hectare stretch of forest, beach and sand dunes. Each residence has its own private beach, an open-air deck, an infinity pool and outdoor day area. Carefully spaced along the calm cove of Benguerra Island, each bungalow sleeps two guests. Some stand alone, while others are positioned in groups, so family or friends can enjoy a balance of privacy and togetherness.



#### Transfers

- Shared Helicopter Transfer
- Private Helicopter Transfer

#### Board Basis Options


- Breakfast
- Half Board
- All Inclusive

## ACCOMMODATIONS



### *OCEAN - ONE-BEDROOM RESIDENCE*


Bespoke interiors featuring a generous living room, king bedroom, 2 dressing rooms and a joint bathroom. Your residence experience includes a tailor made butler service, electric mini moke, a private infinity pool and open-air sundeck, a day area and outdoor living room including outdoor shower, signature welcome drink and amenities, smart TV and WiFi and turquoise cove views. The private sanctuary is compromised of 370sq. m. across 150sq. m. bedroom and living interior and 220sq. m. of pool and day area on a dedicated one acre plot.

 2 Adults



### *ONE-BEDROOM RESIDENCE*


Bespoke interiors featuring a generous living room, king bedroom, 2 dressing rooms and a joint bathroom. Your residence experience includes a tailor made butler service, electric mini moke, a private infinity pool and open-air sundeck, a day area and outdoor living room including outdoor shower, signature welcome drink and amenities, smart TV and WiFi and turquoise cove views. The private sanctuary is compromised of 370sq. m. across 150sq. m. bedroom and living interior and 220sq. m. of pool and day area on a dedicated one acre plot.

 2 Adults



### *ONE-BEDROOM RESIDENCE WITH ANNEX*

The same dimensions and features as the one bedroom residence, this accommodation includes an additional self-contained annex. The annex is suitable for young children, support personnel or older children looking for some independence. With a choice of twin beds or a king bed, the annex features one dressing room and one bathroom with shower and bathtub. The annex and main bungalow are connected via a joint open-air deck and share the same pool and day area with an outdoor living room, an outdoor shower and an infinity pool. The private sanctuary is compromised of 430sq. m. across 210 sq. m. bedrooms and living interiors and 220sq. m. pool and day area on a dedicated 1.25 acre plot.

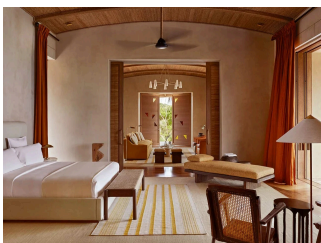
 2 Adults



### *TWO-BEDROOM RESIDENCE*

The bungalows are connected via an open-air deck, with each bungalow featuring bespoke interiors, a generous living room, a king bedroom. The residence experience includes tailor made butler service, electric mini moke, a private infinity pool and open-air sun deck, a day area and outdoor living room including outdoor shower, signature welcome drink and amenities, king beds, smart TV and WiFi and turquoise cove views. The private sanctuary is compromised of 570sq. m. across 300sq. m. bedroom and living interiors and 270sq. m. pool and day area on a dedicated 1.75 acre plot.

 4 Adults



### *KISAWA RESIDENCE TWO-BEDROOM*

Two bungalows are connected via an open-air deck, with each bungalow featuring bespoke interiors, a generous living room, king bedroom, two dressing rooms and a joint bathroom. The founder's residence comes with a unique view of both the ocean and the cove sides of the island, a larger private plot and includes personal touches such as a pan-African antiques and art collection. The residence experience includes tailor made butler service, electric mini moke, a private infinity pool and open-air sun deck, a day area and outdoor living room including outdoor shower, signature welcome drink and amenities,

king beds, smart TV and WiFi and turquoise cove views. The private sanctuary is compromised of 570sq. m. across 300sq. m. bedroom and living interiors and 270sq. m. pool and day area on a dedicated 2.25 acre plot

 4 Adults



### *THREE-BEDROOM RESIDENCE*

Three individual bungalows grouped together, with each bungalow featuring a bespoke interior, a generous living room, a king bedroom, two dressing rooms and an expansive bathroom with standalone bathtub and shower. Two bungalows are connected by an open air deck, with the third bungalow positioned close by and easily accessible by a connecting footbath over white sand. The residence experience includes a tailor made butler service, an electric mini moke, a main private infinity pool and open air sun deck plus and additional smaller infinity pool and sun deck. Also, a main day area and outdoor living room including outdoor shower and bathroom, signature welcome drink and amenities, king beds, smart TV and WiFi and turquoise cove views. The private sanctuary is compromised of 840sq. m. across 450sq. m. bedroom and living interiors and 390sq. m. pools and day area on a dedicated 2.5 acre plot.

 6 Adults

---

## FOOD AND DRINK

### RESTAURANTS



### *THE MAIN TERRACE*

The extended living room, open all day, offering refined global cuisine.



### *COVE MUSSASSA*

A relaxed, outdoor beach cafe & bar, open all day and late into the evening.





### *BARACCA*

Serving Mozambican dishes with fresh, homegrown flavours. This secluded part of the sanctuary enjoys incredible sunset views.



### *PIZZA TUK TUK*

The customised Pizza Tuk Tuk offers fresh oven pizza, cooked to guests preferences.

## GALLERY

