



 51 Rooms

 2 Restaurants

 4 Star +

 2 Bars

LE DUC DE PRASLIN HOTEL & VILLAS

With an 'out of this world' location combined with world-class facilities and amenities, it is no wonder that Le Duc de Praslin is often considered as the 'Jewel of Cote D'Or'! It is set on Praslin's outstanding Cote D'Or beach in the Seychelles. The turquoise sea lapping the fine white sand of Cote D'Or beach is just a few steps away from the luxurious retreat amidst lush tropical gardens. The property offers the widest choice of luxury accommodation and exquisite dining options. Le Duc de Praslin offers the holiday of a lifetime with true Seychellois hospitality and exceptional value. Extensive improvements, upgrading and new additions to its facilities have won Le Duc de Praslin many awards to position it amongst the best hotels of Seychelles. Not to forget its reputation as the best lifestyle hotel with vibrant entertainment at the beach bar by the DJs three days a week.

Suitable For

- Adventurous
- Wellness Focused
- Beachfront

Board Basis Options

- Half Board
- Full Board

FACILITIES



WATER SPORTS



SCUBA DIVING



SPA




GYM

ACCOMMODATIONS



OCEAN ROOM


Designed for the modern traveller, the 'Ocean' rooms are part of the new 20-room resort located close to the beach. They are well appointed with fashionable indoor and outdoor furniture, and incorporate the latest technology. All rooms are approximately 55 m², with a balcony or terrace offering ample living space. The decoration of the rooms incorporates the elements of the sea. Subtle hues of blue and turquoise capture these elements which permeate the rooms.

 2 Adults



SUPERIOR ROOM


The 20 Superior Rooms set in the gardens exude a more authentic local charm. The spacious rooms (65 m²) are scattered around the main building that houses the reception and the main restaurant, where water meanders through fish ponds and lush tropical gardens amidst a profusion of flowers to create a 'zen' atmosphere.

 2 Adults



HONEYMOON SUITE


The 4 Honeymoon Suites feature both an outdoor courtyard and an outdoor shower offering guests a large indoor and outdoor space with a swing. The rooms are spacious (75-80 sqm) and tastefully decorated to reflect a romantic allure. These rooms are suitable for 2 adults only.

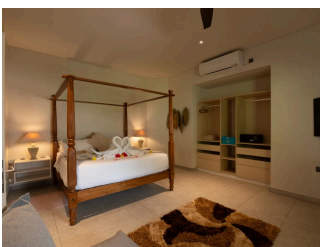
 2 Adults



ONE BEDROOM FAMILY SUITE


These 2 large suites (100 m²) are designed to accommodate families with space in mind. Fully equipped to accommodate children as well as adults, the family suites are an ideal package for those looking for excellent value for money for a larger group. They consist of a master bedroom with a double bed and a bunk bed in the living room for children with the possibility of adding an extra bed or a baby bed.

 2 Adults



TWO BEDROOM FAMILY SUITE

The 2 suites (135-140 m²) are designed to accommodate adults and children in a large living space. The family suites are an ideal option for those looking for great value for money for a group. These suites have two separate bedrooms. One of them has 2 king-size beds; the other has 1 king-size bed and 2 large single beds. Then, we can add up to 2 extra beds in the living room for children.

 4 Adults



VILLA 180


Villa 180° (300 m²) offers 3 en-suite bedrooms, with a fully equipped kitchen and a large outdoor terrace with spectacular sea views. The villa is decorated in a contemporary style and is ideal for families or groups looking for their own privacy with access to the hotel facilities. The kitchen, dining room and living room are located on the ground floor with covered terrace while the upper floor houses the three bedrooms and a small sitting area.

 6 Adults



VILLA 270


Villa 270 (400 m²) – Offers 4 bedrooms and bathrooms, all with access to large terraces with sea views, two fully equipped kitchens, swimming pool with separate paddling pool, and barbecue. It is the ideal getaway for large families or groups of friends who wish to enjoy the hotel facilities whilst still enjoying their privacy. The villa is decorated and furnished in a contemporary style and the interior design captures its natural surroundings and stunning views of the Côte d'Or bay.

 8 Adults



VILLA 360

Villa 360° (700m²) – located on a ridge overlooking the Côte d'Or beach, this spacious modern 4 bedroom villa offers 360° views of the sea, valley and mountains. The villa is divided into 2 sections – a spacious living area with a large modern kitchen and lounge, contemporary furniture and a covered terrace with a barbecue area. The minimalist furniture and decoration are enhanced with unique decorative pieces. The living area extends onto an open terrace with an infinity pool. The living area is completed by an aero-therapy pool and exclusive outdoor furniture. The bedroom section offers 4 en-suite bedrooms with large walk-in closets, spacious bathrooms and indoor/outdoor showers – the mountain-facing bathrooms boasting an additional overhanging bathtub. Other amenities include IDD telephone, satellite TV in all bedrooms and the living room, complimentary Wi-Fi, safe and all the mod cons of modern luxury living.

 8 Adults

FOOD AND DRINK

RESTAURANTS



Café des Arts

Located directly on the beach, Café des Arts Restaurant has earned its reputation as the best restaurant in Seychelles by creating exceptional mouth-watering dishes served in the most stunning setting.



The Dauphin Restaurant

"Le Dauphin" is the hotel's main restaurant located in the heart of the resort. Surrounded by water and live fish ponds amidst a profusion of flowers and plants, the restaurant serves a sumptuous evening buffet and a delicious breakfast buffet in an elegant tropical setting.

BARS



THE BLUE OCTOPUS AND THE MOJITO BARS



CHILL OUT TAPAS LOUNGE BAR



BAR CHARCOAL

GALLERY



