




 149 Rooms

 3 Restaurants

 5 Star +

 4 Bars

MARADIVA VILLAS RESORT & SPA

FLIC EN FLAC, WESTERN MAURITIUS

Recently refurbished and reopened in 2023, Maradiva is an intimate all-villa resort on Mauritius' west coast, around 45 minutes from the airport. With just 63 private pool villas ranging from one to three bedrooms, it suits couples and families seeking space and privacy. Dining spans five restaurants offering varied cuisine, supported by a wine cellar, spa, boutique and kids' club. Activities include tennis, golf, snorkelling and kayaking, giving agents a well-rounded luxury villa option with strong lifestyle appeal.

Suitable For

- Family & Kids
- Honeymoon Benefits
- Wellness Focused
- Beachfront
- Golfers

Board Basis Options

- Half Board
- Breakfast

FACILITIES



WATER SPORTS



GOLF FACILITIES



SPA



KIDS CLUB



YOGA



GYM



WINE CELLAR



TENNIS COURT

ACCOMMODATIONS



LUXURY SUITE POOL VILLA

Luxury Suite Villa offers spacious separate living areas, bedroom and private pool. The villa itself is 163 sqm. Perfect for couples and families. Villas can be two-bedroom to allow for families.

2 Adults



BEACHFRONT LUXURY SUITE POOL VILLA

These Beachfront Luxury Suite Pool Villa are all equipped with private pool and also are all interconnecting with an Exclusive Suite Villa. These properties feature 1 bedroom at a large 163m2 in size with a plunge pool of 15m2. Situated on the beachfront, these villas can accommodate 2 adults and 1 extra bed for a child (less than 12 years) and baby cot.

2 Adults



EXCLUSIVE SUITE POOL VILLA

Exclusive Suite Pool Villa offers spacious separate living areas, bedroom and private pool. The villa itself is 200 sqm. Perfect for couples and families. Villas can be two-bedroom to allow for families.

2 Adults



PRESIDENTIAL SUITE POOL VILLA

These Presidential Suite Pool Villas offer 2 bedrooms with a massive 345m2 in space. They also feature a swimming pool of 56m2, set on the beachfront. Each of the two 345m2 Presidential suites takes pride of place at the centre of the resort's crescent beach and can accommodate up to 4 adults and 1 extra bed for a 1 child or a teenager up to 16 years of age and one baby cot.

4 Adults



2 BEDROOM LUXURY SUITE POOL VILLA

Spacious separate living areas, two one-bedroom rooms interconnected by a door with a private pool. The villa itself is 163 sqm. Perfect for couples and families

4 Adults



2 BEDROOM BEACHFRONT SUITE POOL VILLA


Spacious separate living areas, two one-bedroom rooms interconnected by a door with a private pool. The villa itself is 163 sqm. Perfect for couples and families

 4 Adults



4 BEDROOM RESIDENCE POOL VILLA


With 4 en-suite bedrooms, the villas offer a majestic living space, with outdoor terrace and private 30 m2 infinity pool, with direct access to the lagoon, offering a view conducive to daydreaming. Exceptional interior services serving large volumes of life. Here luxury and comfort combine to create a prestigious living environment. The interior design and decoration signed by an interior designer embodies the contemporary reflection of the Mauritian tradition.

 8 Adults



FAMILY LUXURY SUITE POOL VILLA

Everything needed for precious family time is here, both indoors and out. With two bedrooms and lush garden views, They are exemplars of relaxation and beauty as one.

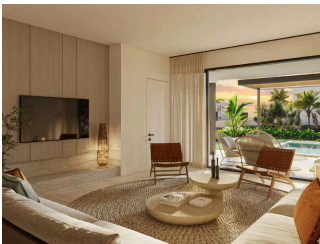
 4 Adults



BEACHFRONT FAMILY SUITE POOL VILLA

This unique villa with its stunning views of the Ocean is a family haven – a place in which to be truly touched by and share in the island's exotic beauty. With the second bedroom indoors and the 15m2 heated pool outdoors, there is all the space and privacy you need to thrive together.

 4 Adults



RESIDENCES - SHOBA BY MARADIVA

Each of the 7 residences elegantly bridges sky, land and sea, allowing you to savour the splendour of every moment. Expansive terraces offer stunning views of Le Morne. Featuring three en-suite bedrooms, the chic, light-filled interiors of these apartments exude charm and sophistication, while a range of amenities ensures your comfort. With bespoke service tailored to your preferences, these residences provide a truly refined and personalized retreat.

 6 Adults



RESIDENCES WITH POOL - SHOBA BY MARADIVA


Each of the 7 residences elegantly bridges sky, land and sea, allowing you to savour the splendour of every moment. Expansive terraces offer stunning views of Le Morne. Featuring three en-suite bedrooms, the chic, light-filled interiors of these apartments exude charm and sophistication, while a range of amenities ensures your comfort. With bespoke service tailored to your preferences, these residences provide a truly refined and personalized retreat. Features a warmed infinity pool.

 6 Adults



PENTHOUSE - SHOBA BY MARADIVA


Penthouse living with rooftop pools that dissolve into the horizon and serene interiors that cocoon you in elegance. These exclusive penthouses offer breath-taking panoramic views of Le Morne, with terraces that seem to float effortlessly between the azure and turquoise waters. The seamless transition from the opulent interior to the expansive outdoor space creates a unique, elevated living experience, where every moment is framed by the spectacular natural beauty surrounding you.

 6 Adults



VILLAS - SHOBA BY MARADIVA

Unveil a harmonious blend of architectural brilliance and pure luxury, where four en-suite bedrooms, sweeping terraces and private infinity pools frame a tranquil escape. These villas, each featuring four en-suite bedrooms, provide a majestic living space complete with an expansive outdoor terrace and private infinity pool. With direct lagoon access and views that inspire daydreams, these villas offer a mix of luxury and comfort, with exceptional interior services that enhance an already prestigious living environment.

 8 Adults



SIGNATURE VILLA - SHOBA BY MARADIVA

A rare gem—a truly exceptional abode, crafted for those who seek the extraordinary. This villa represents the pinnacle of refined living, where every detail is crafted to perfection. With four en-suite bedrooms, this residence is a true masterpiece in luxury real estate. Designed by Paule de Romeuf, the interiors exude a sophisticated, contemporary charm, offering an atmosphere of elegance that is both unique and exceptional.

 8 Adults

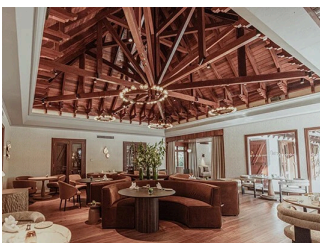
FOOD AND DRINK

RESTAURANTS



CASSINE

Cassine is an all day dining restaurant offering an exquisite blend of refined Mauritian and Mediterranean cuisines. Choose from a menu of fresh fish caught daily and a range of tender meats, all combined with herbs and vegetables hand-picked from the kitchen garden.



CILANTRO

Cilantro specialises in stunning Indian flavours with North Indian traditions primarily influencing the refined cuisine, as well as a combination from other regions, providing a variety of imaginative dishes.



HAIKU

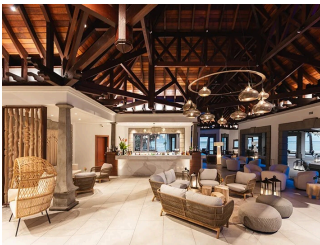
Haiku offers Japanese cuisine and a theatrical Teppanyaki experience. With a traditional Japanese menu at its core, the artistic Teppanyaki grill bar experience offers an exceptional range of fresh meats and fish and the pure bliss of traditional Japanese sushi and sashimi. For those seeking an intimate dining experience, step through to the Asian dining cove. Here you will find a romantic twist to the menu, with Asian influences to add to the variety of choices.



BEACH HOUSE GRILL

Beach House Grill is a coastal beach grill restaurant where guests can indulge in a fusion of the freshest seafood and local dishes. This is a place where the breathtaking ocean views, warm hospitality and sea-fresh flavours capture the true essence of the island.

BAR



LANTANA BAR

GALLERY



