




 5 Rooms

 1 Restaurants

 4 Star

 0 Bars

## MAYA TANGALLE

### Suitable For

- Family & Kids
- Adventurous
- All Inclusive
- Coastal
- National Parks

### Board Basis Options


- Breakfast
- Half Board
- Full Board

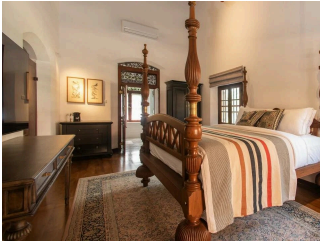
## ACCOMMODATIONS



### *PRESIDENTIAL SUITE*

The signature suite at Maya Tangalle is spacious and roomy designed for ultimate luxury with fine art and rich hues of ebony and brass. The décor and furnishing is harmoniously blended with contemporary design elements that joins luxury, elegance and comfort. This expertly designed Presidential Suite features teak floors, luxury fittings from a four poster king-sized ebony bed, customised locally crafted brass lamps, marble floor in the toilet, gold plated toilet fittings (Jaguar taps, Villeroy & Boch toilet fittings), a spacious bathtub, his and her sinks, rain shower, dining area with mini pantry and a living area with a 75 Inch Smart TV and its own private courtyard built within the suite - all these elements combine to create an ambience of opulence and luxury which is beyond captivating. The Presidential suite is set over 180 m2 and has a light and airy sitting room with dining room seating for 4.

 2 Adults



### *KING DELUXE ROOM*


The King Deluxe is a favorite amongst most of our visitors. Memories of a bygone age are evoked when you step into the King Deluxe Room, the room offers an accommodation experience that blends the charm of history with contemporary style and comfort. This spacious room is 80 square meters and has views to inspire. The room features a teak-wooden floor, four poster Burma teak bed, customised locally crafted brass lamps, marble floor in the toilet fitted with Jaguar taps and Villeroy & Boch toilet fittings along with a 65 Inch Smart TV. The room offers an accommodation experience that blends the charm of history with contemporary style and comfort.

 2 Adults



### *DELUXE ROOM*

Our Deluxe Rooms come with its own private courtyard and direct access to the main pool. All our Deluxe rooms come with white titanium floors and boast of luxury toilets with marble floors fitted with Jaguar taps and Villeroy & Boch toilet fittings. Each room having its own tastefully handpicked art or photography. These rooms are designed to enhance bright and airy space, immaculately envisioned with sumptuous mix of colour to bring out each rooms individual character enriching the extravagance of each room.

 2 Adults

---