



 51 Rooms

 3 Restaurants

 5 Star +

 1 Bars

## PARK HYATT MALDIVES HADAHAA

### GAAFU ALIFU ATOLL, MALDIVES

Nestled in the secluded Huvadho Atoll, Park Hyatt Maldives Hadahaa is home to an award-winning house reef, renowned for its pristine beauty and vibrant marine life. Just 55 km from the Equator, the reef offers exceptional diving and snorkeling opportunities, where guests can encounter sea turtles, blacktip reef sharks, and colorful tropical fish. With 51 luxurious villas and the 3-bedroom Kiaali Residence, the resort provides a private, serene retreat. Experience nature through marine conservation efforts, private island picnics, and Maldivian-inspired dining. At Hadahaa, luxury and nature seamlessly blend, offering a sanctuary for relaxation and exploration.

#### Suitable For

- Family & Kids
- Honeymoon Benefits
- All Inclusive
- Outstanding Snorkelling

#### Transfers

- Domestic Flight + Speedboat Transfer - ( 80 Mins )

#### Board Basis Options

- Breakfast
- All Inclusive
- Half Board Plus
- Full Board Plus

#### Island Size

- Small

## Reef Type

▪ Exceptional House Reef

### FACILITIES



WATER SPORTS



SCUBA DIVING



INDOOR SPORTS



SPA



KIDS CLUB



YOGA



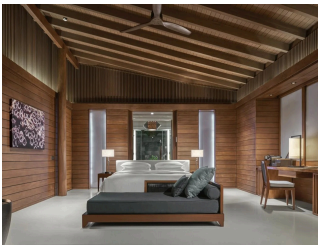
GYM

CONFERENCE  
FACILITY




PADEL COURT

### ACCOMMODATIONS



#### BEACH VILLA


(165 sqm) villas features a king bed with chaise lounge, private deck with table and chairs, sunbeds, indoor and outdoor shower area with terrazzo bathtub and rain shower area with direct beach access.

 2 Adults



#### BEACH POOL VILLA


(180 sqm) villas are fitted with a king bed, chaise lounge overlooking a private plunge pool and deck, indoor and outdoor shower area with terrazzo bathtub and rain shower area with direct beach access.

 2 Adults



### *DELUXE BEACH POOL VILLA*


(265 sqm) villa featuring a large pool with semi-submerged sun beds, outdoor bale/cabana, a king size bed and a private outdoor terrazzo bathtub and rain shower area.

 2 Adults



### *OVERWATER VILLA*


(115 sqm) water villas with 180° views of the ocean, features a king bed, indoor bathtub, sun deck with daybed and direct access to the house reef.

 2 Adults



### *OVERWATER SUNSET POOL VILLA*


The 115 sqm luxury water villa offers a serene retreat above the water. Designed with native Maldivian timber and stone, the villa features floor-to-ceiling windows, a king-sized bed, and a private deck. Guests can enjoy a plunge pool, an outdoor bale or cabana, and panoramic sunset views, all while immersed in the natural beauty of the Maldives.

 2 Adults



### *2 BEDROOM BEACH POOL VILLA*

(300 sqm) villa fitted with a king size bed and a private outdoor terrazzo bathtub and rain shower area. Also includes a second bedroom at 44 sq m, fitted with two single beds and a separate bathroom. The villa features large pool with semi-submerged sun beds, outdoor bale/cabana.

 4 Adults



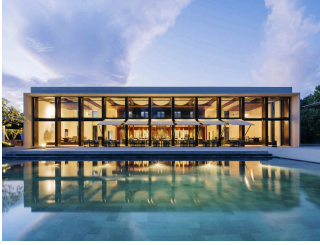
### *KIAALI RESIDENCE (3 BEDROOM)*

This 895 sqm residence offers panoramic views of the Indian Ocean and includes a 16-meter freshwater infinity pool alongside three bedrooms with ensuite air-conditioned bathrooms, accommodating up to six guests. The private infinity pool terrace features sunken loungers, a shaded outdoor dining area, and a lounge space. Separate decks connect to the master and king bedrooms, providing added privacy. The contemporary overwater retreat combines soft light brown and aquamarine furnishings with advanced room control features, creating a tranquil atmosphere. Expansive floor-to-ceiling windows illuminate the spacious living and dining areas with natural light and ocean views. Direct access to the lagoon house reef enhances the experience, offering opportunities for underwater exploration.

 6 Adults

## FOOD AND DRINK

### RESTAURANTS



#### *THE DINING ROOM*

The Dining Room is a contemporary a-la-carte restaurant serving a variety of international cuisine



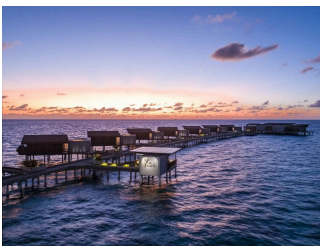
#### *THE ISLAND GRILL*

The Island Grill, this signature restaurant features a selection of regionally inspired dishes



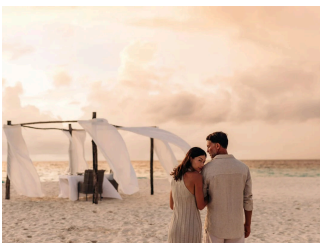
#### *CHEF'S GARDEN TREEHOUSE*

Chef's Garden Treehouse features an all-plant-based menu with ingredients sourced from Hadahaa's own organic garden or within the atoll



#### *KOI AT THE DRIFT*

Koi at The Drift is an intimate overwater Japanese restaurant offering freshest, high-quality sushi and sashimi



#### *PRIVATE DINING*

Experience the charm of private dining locations around the island. Each venue is inspired by the natural environment including starlight, sunset, lagoon and beach

**BAR**



*THE BAR*

**GALLERY**



