




 124 Rooms

 3 Restaurants

 5 Star

 2 Bars

PARK HYATT ST. KITTS

ST. KITTS ISLAND, SAINT KITTS AND NEVIS

Park Hyatt St. Kitts has thoughtfully woven the rich culture and history of the destination into the resort and its offerings. From distinct architecture accented with wood paneling and stone work, to inspired culinary delights highlighting fresh produce and ingredients of the location; culturally immersive activities invite guests to learn about St. Kitts, and the hospitality of the colleagues welcome each guest as family. The resort features three signature restaurants, two swimming pools including an adults-only, full-service spa, 24-hour fitness center, dedicated kids club, Topgolf Swing Suite®, two pickleball courts and a half basketball court. Resort activities include non-motorized watersports such as kayaking, paddle boarding and snorkeling, rum tastings, paint and sips, pottery painting, steelpan lessons, candle making and more. For convenience, a newly opened grab and go market offers guests quick bites, merchandise and personal care items, a boutique offers resort and swim wear, gifts and more, and a luxury diamond retailer is available.

Suitable For

- Family & Kids
- Honeymoon
- Wellness Focused

Board Basis Options

- Breakfast
- All-Inclusive
- Room Only

FACILITIES



SPA



KIDS CLUB



YOGA



GYM



CONFERENCE
FACILITY

PADEL COURT


NON-MOTORISED
WATER SPORTS

ACCOMMODATIONS



ONE KING BED

Relax in 527 square feet, with one king bed, a spa-inspired bath with deep soaking tub, a private terrace, and plentiful seaside light streaming through your floor-to-ceiling windows.

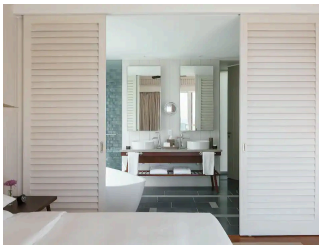
 2 Adults



TWO QUEEN BED


Stretch out in 527 square feet, with two queen beds, a spa-inspired bath with a deep soaking tub, a sitting area, and a private terrace.

 4 Adults



BEACHSIDE KING


Indulge in 527 square feet, with one king bed, a spa-inspired bath featuring a deep soaking tub, and a private terrace overlooking the beach.

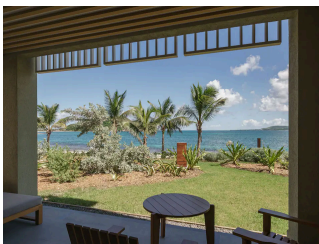
 2 Adults



OCEAN VIEW KING

Luxuriate in 527 square feet, with one king bed, a spa-inspired bath with deep soaking tub, a sitting area, and a private terrace giving you views of Banana Bay and Straits of Nevis.

 2 Adults



ONE BEDROOM BEACHSIDE SUITE


Spread out in 688 square feet with an additional private deck of 198 square feet. One king bed, a deep soaking tub in your spa-inspired bath, and a private terrace with views of the beach. This is a standard suite.

 2 Adults



ONE BEDROOM OCEAN VIEW SUITE


Relax in 688 square feet with an additional private deck of 198 square feet. One king bed, a deep soaking tub, a separate lounge area, a private terrace, and gorgeous Banana Bay or Straits of Nevis views.

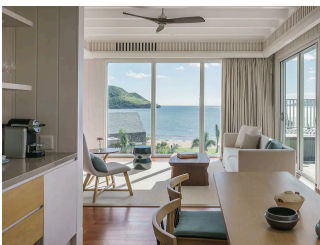
 2 Adults



PLUNGE POOL ROOFTOP SUITE


Revel in this 725-square-foot hotel suite with one king bed, soaking tub, private plunge pool and 615-square-foot deck. Floor-to-ceiling windows frame Caribbean Sea views.

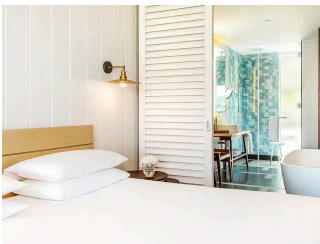
 2 Adults



PLUNGE POOL ROOFTOP DELUXE SUITE


Soar in this 905-square-foot luxury hotel suite with one king bed, soaking tub, lounge and dining areas, private plunge pool and 1,305-square-foot terrace with views of the Caribbean and St. Kitts.

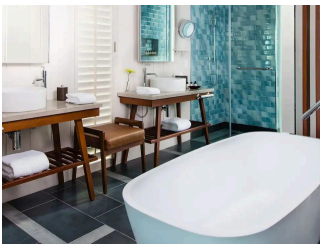
 2 Adults



BEACHSIDE DOUBLE QUEEN


Unwind in 527 square feet, with two queen beds, a spa-inspired bath that includes a deep soaking tub, a private terrace, and magnificent views of the beach.

 2 Adults



OCEAN VIEW QUEEN

Settle into 527 square feet, with two queen beds, a sitting area, a spa-inspired bath that includes a deep soaking tub, and a private terrace with views of Banana Bay and Straits of Nevis.

 2 Adults

FOOD AND DRINK

RESTAURANTS



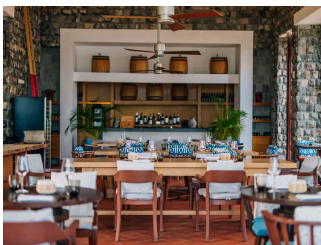
GREAT HOUSE

An all-day dining experience.



FISHERMAN'S VILLAGE

An 'ocean to table' dining experience on the calm edge of the Caribbean Sea, serving lunch and dinner.



STONE BARN

Exclusive fine dining for adults, serving an exquisite tasting menu.

BARS



RAMPART POOL BAR



FANE'S BEACH BAR



FLEMING'S BAR



TOTS RUM BAR

GALLERY



