



 150 Rooms

 3 Restaurants

 4 Star

 2 Bars

## ROBINSON CLUB NOONU

Guests at ROBINSON can experience the Maldives in a whole new light, whether they're enjoying the laid-back atmosphere of the Sundowner bar on the peninsula, dining in style at the Teppanyaki restaurant perched on stilts, or embarking on a dive adventure over the stunning Noonu Atoll. With the all-inclusive "made by ROBINSON" package and the island's easy accessibility from Malé (just 45 minutes away), ROBINSON ensures a family-friendly getaway.

### Suitable For

- Family & Kids
- Honeymoon Benefits
- All Inclusive
- Wellness Focused
- Adventurous
- Surfing

### Transfers

- Domestic Flight + Speedboat Transfer
- Seaplane Transfer

### Board Basis Options

- All Inclusive

## FACILITIES



WATER SPORTS



SCUBA DIVING



INDOOR SPORTS



SPA



KIDS CLUB



YOGA



GYM



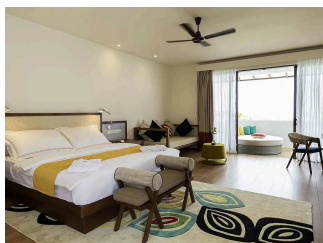
SUBMARINE




PADEL COURT

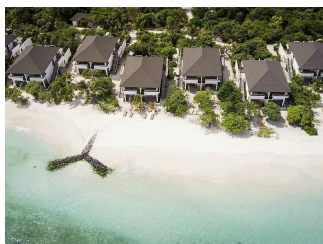
---

## ACCOMMODATIONS




*DOUBLE ROOM CLASSIC SEA VIEW (DBLS1)*

 2 Adults




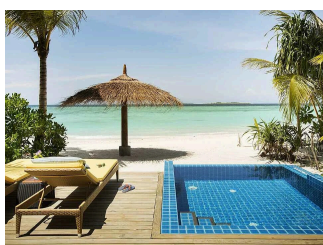
*DOUBLE ROOM SUPERIOR SEA VIEW BEACH ACCESS (DBLS2)*

 2 Adults




*BEACH VILLA PRIVATE POOL (VILS1)*

 2 Adults




*BEACH VILLA POOL (VILS2)*

 2 Adults




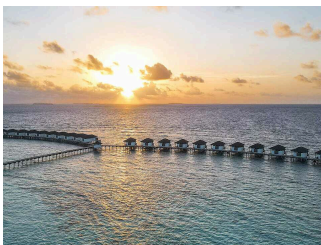
*WATER VILLA (VILW1)*

 2 Adults




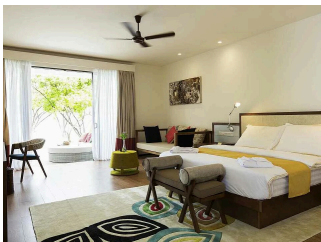
*ONE BED ROOM WATER VILLA POOL (VILW3)*

 2 Adults




*WATER VILLA SUNSET VIEW (VILW2)*

 2 Adults



*FAMILY DOUBLE ROOM SUPERIOR SEA VIEW BEACH ACCESS (FAMS1)*

 3 Adults

## FOOD AND DRINK

### RESTAURANTS



#### *INTERNATIONAL CUISINE*

Open for Breakfast, Lunch and Dinner. Ambiance: Family friendly and modern. Dietary options: Vegetarian, Vegan, gluten - free - Dairy Free. The WellFood program offers a wide range of balanced, protein-rich and carbohydrate-conscious foods.



### *TEPPANYAKI*

Specialty dining venue open for lunch and dinner. Guests enjoy a captivating culinary show as virtuoso chefs prepare exquisite Japanese dishes before their eyes. With an evening ocean view, guests can savor these dishes accompanied by a glass of chilled sparkling sake, SaKen or SaKen Ice (additional charge).



### *NOOMA*

International Cuisine - Open for Dinner (additional charge)

## **BARS**



### *MAIN BAR*



### *SUNDOWNER BAR*

Some photos are non-official images and are used for representative purposes.

---

GALLERY

