



81 Rooms

3 Restaurants

4 Star +

1 Bars

## ROSEWOOD LITTLE DIX BAY

### SPANISH TOWN, BRITISH VIRGIN ISLANDS

#### Suitable For

- Family & Kids
- Honeymoon Benefits
- Adventurous
- Wellness Focused

#### Board Basis Options


- Breakfast
- Half Board
- Full Board
- All Inclusive

### ACCOMMODATIONS



#### OCEAN VIEW JUNIOR SUITE


Surrounded by the swaying palms and sea grapes of the resort's gardens, the Ocean View Junior Suite King delivers breath-taking views of the bay from a large outdoor living area. The island hideaway features an oversized bedroom and a spacious, dual-vanity bathroom with an indoor rain shower, large soaking tub and outdoor garden shower.

 2 Adults



### BEACHFRONT COTTAGE


A short stroll from the water's edge, hexagonal-shaped Beach Front Cottages offer a king bed and a furnished patio with bay vistas. A large bathroom has dual vanities, an indoor rain shower and an outdoor garden shower. A tranquil place to disconnect from the world, expansive Beach Front Cottages are grouped in pairs for enhanced privacy.

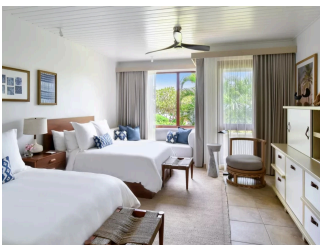
 2 Adults



### OCEAN VIEW COTTAGE


Set near the beach, the Ocean View Cottage features a king bed, a bathroom with dual vanities and a relaxing rain shower, and a furnished patio for enjoying gentle trade winds and splendid views of the sea. Grouped in sets of four, some Ocean View Cottage accommodations offer adjoining options—ideal for families traveling with children.

 2 Adults



### OCEAN VIEW JUNIOR SUITE QUEEN


Surrounded by the swaying palms and sea grapes of the resort's gardens, the Ocean View Junior Suite delivers breath-taking views of the bay from a large outdoor living area. The island hideaway features an oversized bedroom and a spacious, dual-vanity bathroom with an indoor rain shower, large soaking tub and outdoor garden shower.

 2 Adults



### ONE BEDROOM SUITE


Ideally situated near the luminous white-sand beach, the One-Bedroom Suite is comprised of a separate bedroom and living room and a dual-vanity bathroom with an indoor rain shower and outdoor garden shower. The suite opens to a spacious double patio that frames dramatic views of the sea.

 2 Adults



### TREE HOUSE SUITE

Floating among palm trees, overtop a garden patio, the Tree House Suite pays tribute to the stilt houses erected by Laurance Rockefeller at Little Dix Bay in 1964. The bedroom and living room open to a wraparound terrace with beach views. The dual-vanity bathroom features a soaking tub, indoor double rain shower and outdoor rain shower.

 2 Adults



### ONE BEDROOM POOL SUITE


Privacy and luxury converge in the One-Bedroom Pool Suite. Located at the resort's west, the sun-filled suite offers a separate living room and a private patio with a plunge pool overlooking the bay. The dual-vanity bathroom features an indoor double rain shower and an outdoor rain shower.

 2 Adults



### GRAND ONE BEDROOM POOL SUITE

This enchanting suite reinterprets the resort's original hexagonal beach house design. Nestled among sea grapes and palms, it offers a light-filled bedroom and living room which open to an ocean view terrace and private plunge pool. The suite's dual-vanity bathroom features a soaking tub, indoor double rain shower and outdoor rain shower.

 2 Adults

## GALLERY



