



 10 Rooms

 1 Restaurants

 4 Star

 1 Bars

ROSYTH ESTATE HOUSE

KEGALLE, CENTRAL, SRI LANKA

Rosyth Estate House is a boutique hotel in Kegalle, Sri Lanka, set within a 62-acre private tea and rubber estate featuring a colonial planter's bungalow from 1926. It offers uniquely designed accommodations blending colonial charm and modern amenities, along with exceptional Sri Lankan cuisine sourced locally or from the estate itself. Guests can explore the working estate, visit a tea factory, or enjoy spa treatments, yoga sessions, and tea-tasting experiences. Conveniently located about two hours from Colombo Airport, it provides a serene and authentic introduction to Sri Lankan culture and hospitality.

Suitable For

- Family & Kids
- Honeymoon Benefits
- Buy Outs
- Big Residences


Board Basis Options

- Bed and Breakfast
- Half Board
- Full Board
- All Inclusive

ACCOMMODATIONS




CLASSIC ROOMS

 2 Adults




DELUXE ROOMS

 2 Adults




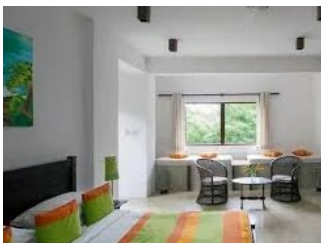
CLASSIC FAMILY

 2 Adults




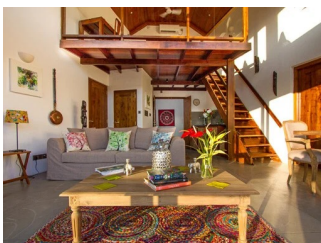
PEPPER & BANYAN SUITES

 2 Adults




TEA SUITE

 2 Adults



ROCK SUITE

 2 Adults



ROCK VILLA

👤 2 Adults

GALLERY

