



 138 Rooms

 6 Restaurants

 4 Star

 5 Bars

# SUGAR BAY BARBADOS

## CHRIST CHURCH, BARBADOS

Set on a calm beachfront on Barbados' south coast, Sugar Bay Barbados is an all-inclusive resort positioned for easy access to both the beach and nearby island highlights. The experience is relaxed and family-friendly, with multiple dining options, several bars and a full kids' club and creche offering. A practical choice for clients seeking a straightforward, all-inclusive Caribbean stay with good facilities and a central coastal location close to the airport.

### Suitable For

- Family & Kids
- Honeymoon Benefits
- All Inclusive

### Board Basis Options

- All Inclusive

## FACILITIES



SPA



KIDS CLUB



GYM

CONFERENCE FACILITY


NON-MOTORISED WATER SPORTS

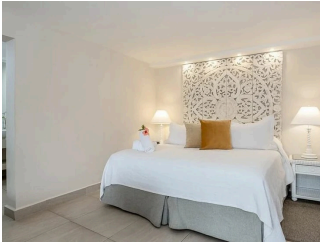
## ACCOMMODATIONS



### *SIGNATURE ROOM (POOL OR GARDEN VIEWS)*


Lead in room category with king size bed, pool/garden view.

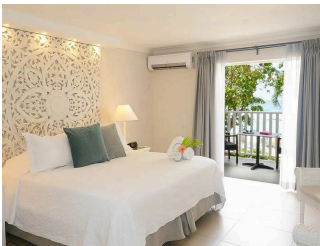
 2 Adults



### *DELUXE SIGNATURE ROOM (POOL OR GARDEN VIEWS)*


King size bed plus pull out queen bed - max 3 pool/garden view.

 2 Adults



### *OCEANFRONT ROOM*


Features king size bed and located overlooking beach and ocean.

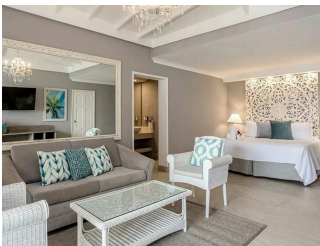
 2 Adults



### *OCEANFRONT HONEYMOON SUITE*


Furnished for comfort and pampering, this suite includes an inviting four poster bed and an understated mix of island colours and bohemian chic inspired décor.

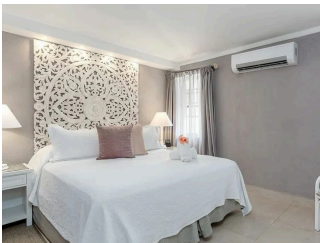
 2 Adults



### *DELUXE OCEANFRONT ROOM*


King size bed plus pull out queen bed - max 3 overlooking beach and ocean.

 2 Adults



### *FAMILY SUITE (POOL OR GARDEN VIEWS)*


One bedroom with king bed, living room with pull out queen bed - max 4, pool/garden view.

 2 Adults



*OCEANFRONT FAMILY SUITE*


One bedroom with king bed, living room with pull out queen bed - max 4.

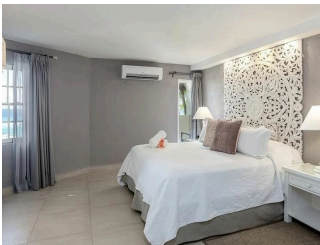
 2 Adults



*TWO BEDROOM SUITE (POOL OR GARDEN VIEWS)*


Two bedrooms with king/queen beds, living room with pull out queen bed Pool/garden views.

 2 Adults




*TWO BEDROOM OCEANFRONT SUITE*

Two bedrooms with king/twin beds, living room with pull out queen bed Pool/garden views.

 2 Adults



*THREE BEDROOM LUXURY OCEANFRONT PENTHOUSE*

 2 Adults

**FOOD AND DRINK**

**RESTAURANTS**



*REEF RESTAURANT*

Open for breakfast, lunch, dinner - buffet style - no reservations needed.



*COLINS BAR & GRILL*

Open for casual beachside lunches and bar open daily - no reservations needed.



*UMI*

Thai and Sushi fusion restaurant, open for dinner - reservations required. Limited dining.



*SIZZLE STEAK HOUSE*

Steak restaurant, open for dinner - reservations required. Limited dining.



*DRIFTWOOD*

Coffees, teas, all day. Plus afternoon tea daily.

**BARS**



*LAZY MONGOOSE PUB*



*REEF BAR*



*COLINS BAR*



*POOL BAR*

Some photos are non-official images and are used for representative purposes.

---

**GALLERY**

