


 13 Rooms

 1 Restaurants

 4 Star

 1 Bars

## THE FORT PRINTERS

### GALLE, SOUTH, SRI LANKA

The Fort Printers is a boutique hotel nestled within the UNESCO World Heritage Site of Galle Fort in Sri Lanka. This 18th-century mansion has been thoughtfully restored, blending contemporary design with original colonial features to offer an intimate and elegant atmosphere. The hotel comprises 13 uniquely designed rooms, each named after academic subjects and personalities, reflecting its history as a former college and printing press. Guests can enjoy fresh seafood and organic local produce at the hotel's 39 Bistro, which offers both indoor and al fresco dining options.

#### Suitable For

- Family & Kids

#### Board Basis Options

- Bed & Breakfast
- Half Board
- Full Board

## ACCOMMODATIONS



### 41 CHURCH STREET

There are 05 suites from this category.



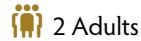
### *54 PEDLAR STREET*

There are 05 suites from this category.



### *HEADMASTER'S*

Located on first floor, double bed with mosquito net on a raised platform overlooking the lighthouse and the pool in courtyard, old hard wood floors, exposed antique wood beams, separate dressing room with WC, copper clad shower, luxury toiletry, and a mini bar with tea making facilities.

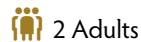


2 Adults



### *PREFECT'S*

Located on ground floor in the frangipani courtyard and next to the pool, double bed with mosquito net, separate shower room and an antique bath tub, outside sitting area, luxury toiletry, mini bar with tea making facilities



2 Adults



### *ART, HISTORY & GEOGRAPHY (HERITAGE WING)*

Located on first floor with views over beautiful tiled roof and with sitting areas in front of each in the wrap around gallery. The rooms have beautiful old hard wood floors, exposed antique wood beams, a mix of contemporary and classic furniture and silk curtains. Each room has a double bed with mosquito net, separate shower room, outside sitting areas, luxury toiletry and a mini bar with tea making facilities.



### *HISTORY*



2 Adults




### *GEOGRAPHY*



2 Adults




### *ARTS*

 2 Adults



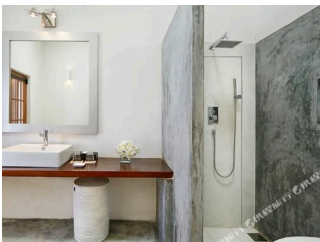
### *CHURCH SUITE 1*

 2 Adults




### *CHURCH SUITE 2*

 2 Adults




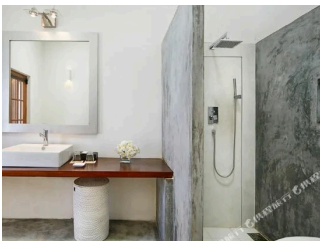
### *CHURCH SUITE 3*

 2 Adults




### *CHURCH SUITE 4*

 2 Adults



### *CHURCH SUITE 5*

 2 Adults




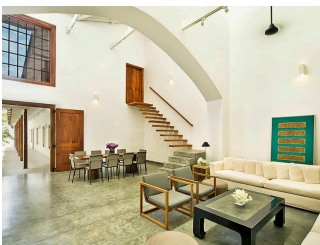
*PEDLAR SUITE 1*

 2 Adults



*PEDLAR SUITE 2*

 2 Adults



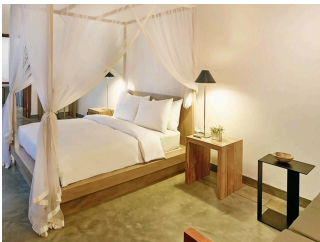
*PEDLAR SUITE 3*

 2 Adults




*PEDLAR 65 SUITE 1*

 2 Adults




*PEDLAR 65 SUITE 2*

 2 Adults



*PEDLAR 65 SUITE 3*

 2 Adults



GALLERY

