



4 Rooms

0 Restaurants

4 Star

0 Bars

THE WARDEN'S HOUSE

Suitable For

- Family & Kids
- Adventurous
- All Inclusive
- National Parks

Board Basis Options


- Breakfast
- Half Board
- Full Board
- All Inclusive

ACCOMMODATIONS



YALA SUITE


Named after Yala, the very national park that is in close proximity to the property, this suite is a generously proportioned space with a charming verandah. Décor details of this suite pay homage to the natural landscapes and wildlife diversity that Yala National Park has to offer.

 2 Adults



KUMANA SUITE


Inspired by the wilds of Kumana, which is home to over 200 bird species, the suite displays artwork and photography of rare and endemic avian fauna of Sri Lanka. The suite's magnificent four-poster bed with pristine white linen and draperies is the ideal place for respite after a day by the Menik River.

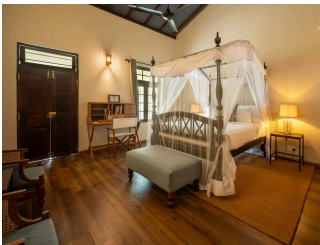
 2 Adults



HORTON PLAINS SUITE


Horton Plains, a national park in central Sri Lanka is renowned for its biodiversity, hosting a rich array of flora and fauna including species like the Sri Lankan leopard and Sambar deer. This spacious suite is ideal for a family, providing a mix of elegance and old-world charm, exhibiting antiques and curios from the upland regions of the island.

 2 Adults



WILPATTU SUITE

Every detail of the Wilpattu Suite pays homage to the wilderness of Sri Lanka's northwest coast and the cultural legacy of the indigenous people of Sri Lanka, the Veddas. From vintage photos of the Palace of Kuveni, the Vedda queen who ruled over the land in antiquity to sweeping landscapes of the Villus, the suite takes your imagination to the land of the lakes, Wilpattu.

 2 Adults